

**UCI**  
UTAH CORRECTIONAL INDUSTRIES



**Complete Catalog**

**Furniture**

## UCI MISSION

*Utah Correctional Industries is dedicated to public safety through innovative career building, community partnerships, and quality production to develop successful people.*



# TABLE OF CONTENTS - FURNITURE

State Use Law.....	10
Get To Know UCI.....	11
Traditional Industries Programs & Private Sector Partnerships.....	12

## **Campus 13**

Captain's Beds.....	14
Dressers.....	14
Night Stands.....	14
Wardrobes.....	14

## **City Line 15**

Bookcases.....	16
Credenzas.....	16
Executive Desks.....	16
L-Shaped Secretarial Desks.....	16
Lateral Filing Cabinet.....	16
Overheads/Hutches.....	16-17
Pedestal Boxes.....	17
Wardrobes.....	17

## **Highland 19**

Bookcases.....	20
Credenzas.....	20
Executive Desks.....	20
Hutches.....	20-21
L-Shaped Secretarial Desks.....	21
Lateral Filing Cabinets.....	21
Pedestal Boxes.....	21
Tables (Coffee, Conference, Corner, & End).....	21-22
Wardrobes.....	22
Workstation.....	22

## **Moab 23**

Bookcases.....	24
Credenzas.....	24
Executive Desks.....	24-25
Hutches.....	25-26
L-Shaped Secretarial Desks.....	26
Lateral Filing Cabinets.....	26
Pedestal Bookcase.....	27
Pedestal Boxes.....	27
Vertical Filing Cabinet.....	27
Wardrobes.....	27
Workstation.....	27

# TABLE OF CONTENTS - FURNITURE

<b>Sit-Stand</b>	<b>29</b>
2-Legs.....	30
3-Legs.....	30
Modesty Panel.....	30
Pedestal Boxes.....	30
Sit-Stand Office Examples.....	30
<b>Solitude</b>	<b>31</b>
Bookcases.....	32
Credenzas.....	32
Executive Desks.....	32-33
Hutch.....	33
L-Shaped Secretarial Desks.....	33
Lateral Filing Cabinets.....	33-34
Overhead.....	34
Pedestal Boxes.....	34
Student Desk.....	34
Wardrobes.....	34
<b>Tables</b>	<b>35</b>
Campus Rectangular Study Tables.....	36
Campus Square Study Tables.....	36
Cisco Multi-Purpose Tables.....	36
Cisco Oval Tables.....	36
Cisco Round Tables.....	36
Cisco Square Tables.....	36
Colony Coffee Table.....	36
Colony Corner Table.....	36
Colony End Table.....	36
Flip-Top Table.....	36
Kamas Coffee Table.....	37
Kamas Conference Table (Boat-Shaped).....	37
Kamas Conference Table (Rectangular).....	37
Kamas End Table.....	37
Kamas Oval Table.....	37
Kamas Round Table.....	37
Kamas Square Table.....	37
Park City Table.....	37
Solitude Conference Table.....	37
Trestle Table (Half Round).....	37
Trestle Table (Quarter Round).....	38
Trestle Table (Rectangular).....	38



# TABLE OF CONTENTS - FURNITURE

<b>Supplemental Furniture &amp; Accessories</b>	<b>39</b>
Cabinets, Base.....	40
Cabinets, Upper.....	40
Cammy Desk.....	40
Coat Rack.....	41
Coat Tree.....	41
Collaboration Table.....	41
Corbel.....	41
CPU Holder.....	41
Keyboard Tray.....	41
Mail Slot Cabinets.....	41
Monitor Arms.....	41
Overhead w/Sliding Glass Whiteboard Door.....	41
Pencil Drawers (Highland, Moab, & Solitude).....	42
Podiums/Lecterns.....	42
Whiteboards.....	42
Worksurfaces.....	43
<b>Personal Modifications</b>	<b>45</b>
Woods & Stains.....	46
Melamine & Laminate.....	46
<b>Terms &amp; Conditions</b>	<b>47</b>
<b>Warranty</b>	<b>48</b>

# TABLE OF CONTENTS - SEATING

<b>Task Seating</b>	<b>49</b>
Alt3.....	50
Alto.....	50
Breathe.....	51
Dana.....	51
Danube.....	51
Delta.....	52
Diffrient.....	52
Eclipse.....	52
Freedom.....	52
Griffin.....	52
Ithaca.....	52-53
Liberty.....	53
Maximus Heavy Duty.....	53
Pilot.....	54
Viper.....	54





# TABLE OF CONTENTS - SEATING

<b>Side Seating</b>	<b>55</b>
Attain.....	56
Breathe Sled Base.....	56
Cinto.....	56
Diffrient Occasional Liberty.....	56
Eddy (Beam).....	56
Getti.....	57
Ithaca Ultra Sled Base.....	57
Navigator.....	57-58
Occupy.....	58
Piper.....	58-59
Rigger4.....	59
Sitka.....	59
Stilo.....	59
Tec Line Stools.....	60



# TABLE OF CONTENTS - SEATING

<b>Lounge &amp; Wood Seating</b>	<b>61</b>
Adult Rocking Chair.....	62
Aspen.....	62
B-Sharp Stacker.....	62
Campus.....	62
Canyon.....	62-63
Futon Sofa/Bed.....	63
Marcel.....	63
Midway.....	63
Modular.....	63-64
Monarch.....	64
Nephi.....	64-65
Overstuff.....	65-66
Park City.....	66
Richmond Guest Chair.....	66
Richmond High-Back Wing Lounge Chair.....	67
Richmond Mid-Back Wing Lounge Chair.....	67
Sheridan.....	67-68
Sunset.....	68
Throw Pillows.....	69
University.....	69
Valley.....	69
Child's Lounge & Wood Seating.....	70





# TABLE OF CONTENTS - SEATING

## Miscellaneous Information

Woods & Stains.....	72
Melamine & Laminate.....	72
Fabric & Vinyl Samples.....	73-83
Poly & Paint Color Samples.....	84-85
Here's an idea (Embroidery/Screen-Printing).....	86
Warranty.....	87



# The State Use Law

63G-6a-804. Purchase of prison industry goods.

- (1) (a) A procurement unit that is not a political subdivision shall purchase goods and services produced by the Utah Correctional Industries Division as provided in this section.
- (b) A political subdivision of the state may, and is encouraged to, purchase goods and services under this section.
- (c) A procurement unit is not required to use a standard procurement process to purchase goods or services under this section.
- (2) On or before July 1 of each year, the director of the Utah Correctional Industries shall:
  - (a) publish and distribute to all procurement units and other interested public entities a catalog of goods and services provided by the Correctional Industries Division, including a description and price of each item offered for sale; and
  - (b) update and revise the catalog described in Subsection (2)(a) during the year as the director considers necessary.
- (3) (a) A procurement unit that is not a political subdivision of the state may not purchase any goods or services provided by the Correctional Industries Division from any other source unless it has been determined in writing by the director of Correctional Industries and by the procurement officer or in the case of institutions of higher education, the institutional procurement officer, that purchase from the Correctional Industries Division is not feasible due to one of the following circumstances:
  - (i) the good or service offered by the division does not meet the reasonable requirements of the procurement unit;
  - (ii) the good or service cannot be supplied within a reasonable time by the division; or
  - (iii) the cost of the good or service, including basic price, transportation costs, and other expenses of acquisition, is not competitive with the cost of procuring the item from another source.
- (b) In cases of disagreement under Subsection (3)(a):
  - (i) the decision may be appealed to a board consisting of:
    - (A) the director of the Department of Corrections;
    - (B) the director of Administrative Services; and
    - (C) a neutral third party agreed upon by the other two members of the board;
  - (ii) in the case of an institution of higher education of the state, the president of the institution, or the president's designee, shall make the final decision; or
  - (iii) in the case of any of the following entities, a person designated by the applicable rule-making authority shall make the final decision:
    - (A) a legislative procurement unit;
    - (B) a judicial procurement unit; or
    - (C) a public transit district.

Amended by Chapter 445, 2013 General Session

# Get To Know UCI

UCI is Utah's prison industries program. Under the direction of the UCI director and the Utah Department of Corrections, UCI operates productive enterprises utilizing offender labor to benefit tax-supported entities, which includes all state agencies and political subdivisions.

UCI is a self-supporting program, deriving its revenues solely from the sales of products and services. Not only do you receive quality products when you purchase from UCI, you are also supporting a great program. UCI provides goods and services for public use while saving taxpayers money.

UCI provides training and structured activity for offenders in a real work environment. Offenders working at UCI acquire vocational skills under working conditions similar to those which prevail in private industry; preparing them for legitimate employment after they are released from prison.

UCI provides high quality products designed and manufactured with you in mind. Few people are aware of the numerous products and services that we offer. We can furnish your office, conference room, lounge, waiting room, library, or other work area with quality industry-standard products. Labor intensive services such as general construction, roofing, asbestos abatement, and pavement crack sealing are offered as well.

At UCI you can also purchase clothing, mattresses, interior and exterior signage, and a wide variety of printing services. In an effort to increase our offender employment numbers, we are constantly looking for new products and services. As such, our product line is so diverse and flexible that we are confident that we will always meet the needs of our customers.

Our staff and employees are equally flexible. If there is something you need that we don't offer, we can make the necessary changes to accommodate you and meet your needs.

We invite you to contact one of our marketing representatives for special needs and up-to-date information on any of our products & services or if you would simply like more information about UCI. The number listed below can also be used for requesting information on your current order and to obtain current pricing information.



Contact Information:

801-522-7931

[ucicustomerservice@utah.gov](mailto:ucicustomerservice@utah.gov)

Visit our website at

[UCI.UTAH.GOV](http://UCI.UTAH.GOV)

14717 South Minuteman Drive  
Draper, Utah 84020



**Traditional Industries Programs** - Our traditional industries work programs provide cost-effective, quality goods and services to state agencies, counties, cities, other government municipalities, and numerous private sector partners. Each year these manufacturing and service operations save Utah taxpayers hundreds of thousands of dollars while providing meaningful work experience to inmate workers.

**Private Sector Partnerships** - Included in this catalog are 2 of our (PS) Private Sector / (PIE) Prison Industries Enhancement programs. Below is a detailed breakdown of what a PIE Certification Program is and how you can participate.

The PIE Certification Program was created by Congress in 1979 to encourage states and units of local government to establish employment opportunities for prisoners that emulate private-sector work opportunities. The program is designed to place inmates in a realistic work environment, pay them the prevailing local wage for similar work, and enable them to acquire marketable skills to increase their potential for successful rehabilitation and meaningful employment upon release. A total of 50 jurisdictions may be certified under the PIE Certification Program. To become certified, each program must demonstrate to the Director of the Bureau of Justice Assistance (BJA), U.S. Department of Justice, that it meets statutory and guideline requirements as listed under Mandatory Criteria for Program Participation. The statute and guidelines are designed to create a level playing field with the private sector. UCI has been PIE certified since 1985.

The PIE Certification Program has two primary objectives:

1. Generate products and services that enable prisoners to make a contribution to society, help offset the cost of their incarceration, compensate crime victims, and support their families.
2. Reduce prison idleness, increase inmate job skills, and improve the prospects for successful inmate transition to the community on release.

Eligible jurisdictions that apply to participate in the PIE Certification Program must meet all nine of the following criteria:

1. Legislative authority to involve the private sector in the production and sale of prison-made goods, and administrative authority to ensure that mandatory program criteria will be met through internal policies and procedures.
2. Legislative authority to pay wages at a rate not less than that paid for similar work in the same locality's private sector.
3. Written assurances that the PIE Certification Program will not result in the displacement of workers employed before program implementation.
4. Authority to provide worker benefits, including workers' compensation or its equivalent.
5. Legislative or administrative authority to take deductions not to exceed 80 percent of gross wages for room and board; taxes (federal, state, local); allocations for support of family pursuant to state statute, court order, or agreement by offender; and contributions of not more than 20 percent, but not less than 5 percent of gross wages to any fund established by law to compensate the victims of crime.
6. Written assurances that inmate participation is voluntary.
7. Written proof of consultation with related organized labor before PIE Certification Program startup.
8. Written proof of consultation with related local private industry before PIE Certification Program startup.
9. Compliance with the National Environmental Policy Act and related federal environmental review requirements.

If you are interested in a PS/PIE opportunity or partnership, please call us at 801-522-7931.



# Campus



Please visit us online at [uci.utah.gov](http://uci.utah.gov) to see all that UCI has to offer!

# Campus

**Multiple wood options & sizes  
available; contact us for details.**



**Captain's Bed  
2 Drawer**

**41" D x 85" W x 28-1/2" H**

**Captain's Bed  
Open Storage**

**41" D x 85" W x 28-1/2" H**



**Dresser  
3 Drawer**

**20" D x 36" W x 36" H**

**Dresser  
4 Drawer**

**20" D x 36" W x 48" H**



**Dresser  
5 Drawer**

**20" D x 36" W x 54" H**

**Night Stand  
1 Drawer**

**21" D x 26" W x 24-1/4" H**



**Wardrobe  
2 Full Doors, 2 Full Drawers**

**24" D x 36" W x 72" H**

**Wardrobe  
2 Full Doors, 2 Partial Drawers**

**24" D x 36" W x 72" H**



**Wardrobe  
2 Full Doors, Open Storage**

**24" D x 36" W x 72" H**

**Wardrobe  
2 Partial Doors, 2 Full Drawers**

**24" D x 36" W x 72" H**





# City Line



Please visit us online at [uci.utah.gov](http://uci.utah.gov) to see all that UCI has to offer!

# City Line

**Multiple melamine options & sizes  
available; contact us for details.**



**60" Bookcase  
4 Adjustable Shelves**

**12" D x 32" W x 60" H**



**72" Bookcase  
5 Adjustable Shelves**

**12" D x 32" W x 72" H**



**Credenza  
2 Door (w/1 Shelf)**

**24" D x 68" W x 30" H**



**Credenza  
Open**

**24" D x 62" W x 30" H**



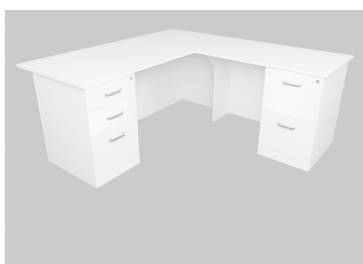
**Executive Desk**

**30" D x 62" W x 30" H**



**Executive Desk**

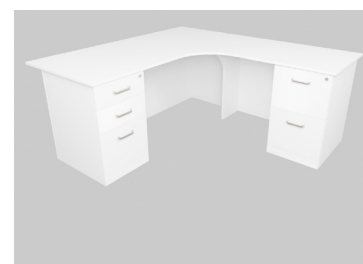
**30" D x 68" W x 30" H**



**L-Shaped Secretarial Desk  
Left or Right Return**

**24" D x 72" W x 30" H  
30" D x 68" W (return)**

**Angled Corner**



**L-Shaped Secretarial Desk  
Left or Right Return**

**24" D x 72" W x 30" H  
30" D x 68" W (return)**

**Radius Corner**



**Lateral Filing Cabinet  
2 Drawer (Lock)  
Freestanding**

**22" D x 33" W x 29" H**



**Overhead  
4-Door w/Cubbies (Locks)**

**14" D x 66" W x 24" H**



**Multiple melamine options & sizes  
available; contact us for details.**

**City Line**



**Overhead  
4-Door w/Cubbies (No Locks)**

**14" D x 66" W x 24" H**

**Overhead  
4-Door w/Open Center (Locks)**

**14" D x 66" W x 18" H**



**Overhead  
4-Door w/Open Center (No Locks)**

**14" D x 66" W x 18" H**

**Overhead  
Open Cubbies**

**14" D x 66" W x 24" H**



**Overhead Hutch  
4-Door (Locks)**

**14" D x 66" W x 48" H**

**Overhead Hutch  
4-Door w/Fabric Board (Locks)**

**14" D x 66" W x 48" H**



**The Fabric Board on the Overhead Hutch is available  
in any of the fabrics found on pages 73-83.**



**Pedestal Box, Mobile  
2 Drawer**

**18" D x 16-1/2" W x 24" H**

**Pedestal Box, Mobile  
3 Drawer**

**18" D x 16-1/2" W x 24" H**



**Wardrobe  
1 Door**

**24" D x 18" W x 78" H**

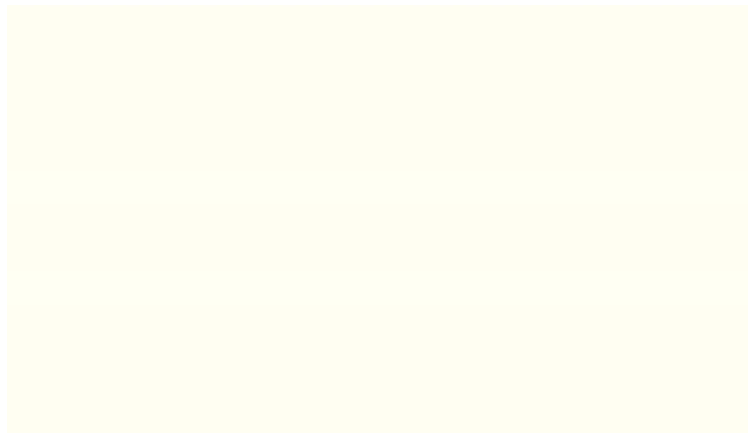
**Wardrobe  
1 Door, 1 Drawer**

**24" D x 24" W x 78" H**



Please visit us online at [uci.utah.gov](http://uci.utah.gov) to see all that UCI has to offer!

## Melamine Options for City Line Furniture



**Galaxy White**



**Folkstone**



**Fog Gray**



**Black**

**Melamine is a great alternative to our wood/stain options if you aren't partial to the traditional look of wood. In addition, melamine is more cost effective.**

**The colors shown here are merely an approximation of the appearance of melamine; the actual melamine will vary from what is graphically represented here.**

# Highland



Please visit us online at [uci.utah.gov](http://uci.utah.gov) to see all that UCI has to offer!



# Highland

**Multiple wood options & sizes  
available; contact us for details.**



**36" Bookcase**  
**2 Adjustable Shelves**

**14-1/4" D x 34-1/2" W x 36" H**

**48" Bookcase**  
**3 Adjustable Shelves**

**14-1/4" D x 34-1/2" W x 48" H**



**60" Bookcase**  
**4 Adjustable Shelves**

**14-1/4" D x 34-1/2" W x 60" H**

**72" Bookcase**  
**5 Adjustable Shelves**

**14-1/4" D x 34-1/2" W x 72" H**



**Credenza**  
**2 Door (w/1 Shelf)**

**22-1/4" D x 72" W x 30" H**

**Credenza**  
**Open**

**22-1/4" D x 72" W x 30" H**



**Executive Desk**

**33" D x 66" W x 30" H**

**Executive Desk**

**38" D x 74" W x 30" H**



**Executive Desk**

**38" D x 78" W x 30" H**

**Hutch**  
**4 Door w/Shelves**

**14-1/4" D x 70-1/2" W x 50" H**



**Multiple wood options & sizes  
available; contact us for details.**

**Highland**



**Hutch  
w/Open Center**

**14-1/4" D x 70-1/2" W x 50" H**

**L-Shaped Secretarial Desk  
Left or Right Return**

**33" D x 72" W x 30" H  
24" D x 42" W (return)**



**L-Shaped Secretarial Desk  
Left or Right Return**

**33" D x 72" W x 30" H  
24" D x 54" W (return)**

**Lateral Filing Cabinet  
2 Drawer  
Freestanding**

**24" D x 36-1/2" W x 30" H**



**Lateral Filing Cabinet  
2 Drawer Double**

**24" D x 70-1/4" W x 30" H**

**Lateral Filing Cabinet  
4 Drawer**

**24" D x 36-1/2" W x 55-1/2" H**



**Pedestal Box  
2 Drawer  
Freestanding**

**24" D x 20" W x 30" H**

**Pedestal Box  
3 Drawer  
Freestanding**

**24" D x 20" W x 30" H**



**Table, Coffee**

**24" D x 45" W x 18" H**

**Table, Conference  
Boat-Shaped**

**36-48" D x 144" W x 30" H**



# Highland

Multiple wood options & sizes  
available; contact us for details.



Table, Conference  
Rectangular  
48" D x 144" W x 30" H



Table, Corner  
23" D x 26" W x 23" H



Table, End  
21" D x 23" W x 23" H



Table, Round  
48" Diameter x 30" H



Wardrobe  
1 Door  
24" D x 22" W x 78" H



Wardrobe  
2 Door  
24-1/4" D x 36" W x 78" H



Workstation  
24" D x 42" W x 30" H



# Moab



Please visit us online at [uci.utah.gov](http://uci.utah.gov) to see all that UCI has to offer!

# Moab

**Multiple wood options & sizes  
available; contact us for details.**



**36" Bookcase**  
**2 Adjustable Shelves**

**12" D x 32" W x 36" H**

**48" Bookcase**  
**3 Adjustable Shelves**

**12" D x 32" W x 48" H**



**60" Bookcase**  
**4 Adjustable Shelves**

**12" D x 32" W x 60" H**

**72" Bookcase**  
**5 Adjustable Shelves**

**12" D x 32" W x 72" H**



**Credenza**  
**2 Door (w/1 Shelf)**

**24" D x 66" W x 30" H**

**Credenza**  
**2 Door (w/1 Shelf)**

**24" D x 72" W x 30" H**



**Credenza**  
**Open**

**24" D x 66" W x 30" H**

**Credenza**  
**Open**

**24" D x 72" W x 30" H**



**Executive Desk**

**30" D x 60" W x 30" H**

**Executive Desk**

**30" D x 66" W x 30" H**





**Multiple wood options & sizes  
available; contact us for details.**

**Moab**



**Executive Desk**

**30" D x 72" W x 30" H**

**Executive Desk  
Bowfront**

**30-36" D x 60" W x 30" H**



**Executive Desk  
Bowfront**

**30-36" D x 66" W x 30" H**

**Executive Desk  
Bowfront**

**30-36" D x 72" W x 30" H**



**Hutch, 2 Door**

**14" D x 35" W x 36-1/2" H**

**Hutch, 4 Door**

**14" D x 47" W x 36-1/2" H**



**Hutch, 6 Door**

**14" D x 59" W x 36-1/2" H**

**Hutch, Open**

**14" D x 35" W x 36-1/2" H**



**Hutch, Open**

**14" D x 47" W x 36-1/2" H**

**Hutch, Open**

**14" D x 71" W x 36-1/2" H**





# Moab

**Multiple wood options & sizes  
available; contact us for details.**



**Hutch Plus  
2 Door w/Shelves**

**14" D x 35" W x 50" H**

**Hutch Plus  
4 Door w/Shelves**

**14" D x 47" W x 50" H**



**Hutch Plus  
6 Door w/Shelves**

**14" D x 59" W x 50" H**

**Hutch Plus  
Corner 2 Door w/Shelves**

**36" D x 36" W x 50" H**



**L-Shaped Secretarial Desk  
Left Return**

**24" D x 72" W x 72" W x 30" H**

**L-Shaped Secretarial Desk  
Right Return**

**24" D x 72" W x 72" x 30" H**



**Lateral Filing Cabinet  
2 Drawer  
Freestanding**

**24" D x 35" W x 30" H**

**Lateral Filing Cabinet  
3 Drawer  
Freestanding**

**24" D x 35" W x 42-1/2" H**



**Lateral Filing Cabinet  
4 Drawer  
Freestanding**

**24" D x 35" W x 55" H**

**Lateral Filing Cabinet  
Combo  
Freestanding**

**24" D x 35" W x 30" H**



**Multiple wood options & sizes  
available; contact us for details.**

**Moab**



**Pedestal Bookcase  
Under Worksurface**

**13" D x 22" W x 29" H**

**Pedestal Box  
2 Drawer  
Freestanding**

**24" D x 18-1/2" W x 30" H**



**Pedestal Box  
3 Drawer  
Freestanding**

**24" D x 18-1/2" W x 30" H**

**Wardrobe  
1 Door**

**24" D x 18" W x 72" H**



**Wardrobe  
2 Door**

**24" D x 36" W x 72" H**

**Workstation**

**24" D x 42" W x 30" H**



# Moab





# Sit-Stand



Please visit us online at [uci.utah.gov](http://uci.utah.gov) to see all that UCI has to offer!

# Sit-Stand

Multiple wood options & sizes available; contact us for details.



**Victory 2-Leg  
Electric Sit-Stand Table Base**

**Three Standard Colors:  
Black, Silver, & White**

**(Lifting Capacity = 220 lbs.)**

**Victory 3-Leg  
Electric Sit-Stand Table  
Base**

**Three Standard Colors:  
Black, Silver, & White**



**(Lifting Capacity = 330 lbs.)**



**Modesty Panel, Hanging**

**3/4" D x 70" W x 16" H**

**Must have corbels (sold separately).**

**Highland Style**

**Modesty Panel, Hanging**

**3/4" D x 70" W x 16" H**

**Must have corbels (sold separately).**



**Moab/Solitude Style**



**Pedestal Box, Short (Moab Style)**

**2 Drawer, Mobile**

**Freestanding**

**19" D x 16-1/2" W x 24" H**

**Pedestal Box, Short (Moab Style)**

**3 Drawer, Mobile**

**Freestanding**

**19" D x 16-1/2" W x 24" H**



**Pedestal Box, Short (Solitude Style)**

**2 Drawer, Mobile**

**Freestanding**

**19" D x 16-1/2" W x 24-3/4" H**

**Pedestal Box, Short (Solitude Style)**

**3 Drawer, Mobile**

**Freestanding**

**19" D x 16-1/2" W x 24-3/4" H**





# Solitude



Please visit us online at [uci.utah.gov](http://uci.utah.gov) to see all that UCI has to offer!



# Solitude

Multiple wood options & sizes available; contact us for details.



**36" Bookcase**  
**2 Adjustable Shelves**  
  
**12" D x 32" W x 36" H**



**48" Bookcase**  
**3 Adjustable Shelves**  
  
**12" D x 32" W x 48" H**



**60" Bookcase**  
**4 Adjustable Shelves**  
  
**12" D x 32" W x 60" H**



**72" Bookcase**  
**5 Adjustable Shelves**  
  
**12" D x 32" W x 72" H**



**Credenza**  
**2 Door (w/1 Shelf)**  
  
**24" D x 66" W x 30" H**



**Credenza**  
**2 Door (w/1 Shelf)**  
  
**24" D x 72" W x 30" H**



**Credenza**  
**Open**  
  
**24" D x 66" W x 30" H**



**Credenza**  
**Open**  
  
**24" D x 72" W x 30" H**



**Executive Desk**  
  
**30" D x 60" W x 30" H**



**Executive Desk**  
  
**30" D x 66" W x 30" H**

**Multiple wood options & sizes  
available; contact us for details.**

**Solitude**



**Executive Desk**

**30" D x 72" W x 30" H**

**Executive Desk  
Bowfront**

**30-36" D x 60" W x 30" H**



**Executive Desk  
Bowfront**

**30-36" D x 66" W x 30" H**

**Executive Desk  
Bowfront**

**30-36" D x 72" W x 30" H**



**Hutch**

**14-3/4" D x 71" W x 50" H**

**L-Shaped Secretarial Desk  
Left Return**

**24" D x 72" W x 72" W x 30" H**



**L-Shaped Secretarial Desk  
Right Return**

**24" D x 72" W x 72" W x 30" H**

**Lateral Filing Cabinet  
2 Drawer, Freestanding**

**24" D x 33" W x 30" H**



**Lateral Filing Cabinet  
3 Drawer  
Freestanding**

**24" D x 33" W x 43" H**

**Lateral Filing Cabinet  
4 Drawer  
Freestanding**

**24" D x 33" W x 56" H**



# Solitude

Multiple wood options & sizes  
available; contact us for details.



**Lateral Filing Cabinet  
Combo  
Freestanding**  
  
24” D x 33” W x 30” H

**Overhead  
2-Door w/Open Cubbies**  
  
16” D x 48” W x 19” H



**Pedestal Box  
2 Drawer  
Freestanding**  
  
24” D x 16-1/2” W x 30” H

**Pedestal Box  
3 Drawer  
Freestanding**

24” D x 16-1/2” W x 30” H



**Student Desk**  
  
24” D x 60” W x 30” H

**Wardrobe  
1 Door**

24” D x 18” W x 78” H



**Wardrobe  
2 Door**  
  
24” D x 36” W x 78” H

**Wardrobe/Pedestal Box Combo**  
  
24” D x 30” W x 49” H





# Tables



Please visit us online at [uci.utah.gov](http://uci.utah.gov) to see all that UCI has to offer!

# Tables

**Multiple wood options & sizes  
available; contact us for details.**



**Campus Study Table  
Rectangular**

**30" D x 72" W x 30" H**

**Campus Study Table  
Square**

**48" D x 48" W x 30" H**



**Cisco Multi-Purpose Table**

**24" D x 48" W x 29" H**

**\*Must select a laminate (Page 46).**

**Cisco Oval Table**

**36" D x 72" W x 29" H**

**\*Must select a laminate (Page 46).**



**Cisco Round Table**

**36" D x 36" W x 29" H**

**\*Must select a laminate (Page 46).**

**Cisco Square Table**

**42" D x 42" W x 29" H**

**\*Must select a laminate (Page 46).**



**Colony Coffee Table**

**18" D x 48" W x 17" H**

**Colony Corner Table**

**22" D x 22" W x 17" H**



**Colony End Table**

**18" D x 22" W x 17" H**

**Flip-Top Table**

**30" D x 60" W x 29" H**

**\*Must select a laminate (Page 46).**



**Multiple wood options & sizes  
available; contact us for details.**

## Tables



**Kamas Coffee Table**

**22" D x 48" W x 16" H**

**Kamas Conference Table  
Boat-Shaped**

**36-48" D x 144" W x 30" H**



**Kamas Conference Table  
Rectangular**

**48" D x 144" W x 30" H**

**Kamas End Table**

**22" D x 30" W x 20" H**



**Kamas Oval Table**

**36" D x 84" W x 30" H**

**Kamas Round Table**

**48" Diameter x 30" H**



**Kamas Square Table**

**48" D x 48" W x 30" H**

**Park City Coffee/End Table**

**24" D x 24" W x 16" H**



**Solitude Conference Table  
(Data Ports Sold Separately)**

**48" D x 144" W x 30" H**

**Trestle Table  
Half Round**

**36" D x 72" W x 30" H**





# Tables

Multiple wood options & sizes  
available; contact us for details.



Trestle Table  
Quarter Round

36" D x 36" W x 30"

Trestle Table  
Rectangular

30" D x 72" W x 30" H



# Supplemental Furniture & Accessories



Please visit us online at [uci.utah.gov](http://uci.utah.gov) to see all that UCI has to offer!

# Supplemental Furniture & Accessories

Multiple wood options & sizes  
available; contact us for details.



**Cabinet, Base (Left or Right Swing)  
1 Door (w/2 Shelves)**

**24-3/4" D x 20" W x 34-1/2" H**

**Cabinet, Base (Left or Right Swing)  
1 Door, 1 Drawer (w/1 Shelf)**

**24-3/4" D x 20" W x 34-1/2" H**



**Cabinet, Base  
2 Door (w/2 Shelves)**

**24-3/4" D x 30" W x 34-1/2" H**

**Cabinet, Base  
2 Door, 1 Drawer (w/1 Shelf)**

**24" D x 28" W x 34-1/2" H**



**Cabinet, Base  
4 Drawer**

**24" D x 24" W x 34-1/2" H**

**Cabinet, Base  
Open (w/2 Shelves)**

**24" D x 24" W x 34-1/2" H**



**Cabinet, Upper (Left or Right Swing)  
1 Door (w/2 Shelves)**

**12" D x 18" W x 30" H**

**Cabinet, Upper  
2 Door (w/2 Shelves)**

**12" D x 24" W x 30" H**



**Cabinet, Upper  
Open (w/2 Shelves)**

**12" D x 30" W x 30" H**

**"Cammy" Desk**

**30" D x 72" W x 30" H**





**Multiple wood options & sizes  
available; contact us for details.**

## Supplemental Furniture & Accessories



**Coat Rack**

**1" D x 36" W x 6" H**

**Coat Tree**

**3" D x 3" W x 60" H**



**Collaboration Table**

**30" D x 72" W x 42" H**

**\*Must select a laminate (Page 46).**

**Corbel, Steel**

**5" D x 1-1/4" W x 8" H**



**CPU Holder**

**17.8" glide track  
2.5"-8.3" adjustable width  
13"-21" adjustable height**

**Keyboard Tray**

**20" D x 28" W x 2-1/2" H**



**Mail Slot Cabinet**

**12" D x 48" W x 24" H**

**Monitor Arm  
Edge**



**Monitor Arm  
Edge 2**

**Overhead  
w/Sliding Glass Whiteboard Door**

**16" D x 48" W x 17" H**



# Supplemental Furniture & Accessories

Multiple wood options & sizes  
available; contact us for details.



**Pencil Drawer  
Highland**  
  
20" D x 20" W  
4" H (Drawer Face)



**Pencil Drawer  
Moab**  
  
20" D x 20" W  
4" H (Drawer Face)



**Pencil Drawer  
Solitude**  
  
20" D x 20" W  
4" H (Drawer Face)



**Podium/Lectern  
Counselor**  
  
27" D x 27-1/2" W x 48" H



**Podium/Lectern  
Executive**  
  
30" D x 36" W x 48" H



**Podium/Lectern  
Multi-Purpose**  
  
22-1/2" D x 26" W x 47-1/2" H



**Podium/Lectern  
Peninsula**  
  
24" D x 56" W x 45-1/8" H



**Whiteboard  
Dry Erase Surface w/Doors**  
  
5" D x 48" W x 48" H



**Whiteboard  
Dry Erase Surface w/Pen Tray**  
  
3-1/4" D x 60" W x 48" H

**Multiple wood options & sizes  
available; contact us for details.**

## **Supplemental Furniture & Accessories**



**Worksurface, Bowfront**

**30-36" D x 72" W x 1" H**

**Worksurfaces also available in one of the melamine or laminate options found on page 46. Call for pricing.**



**Worksurface, Corner (Angled)**

**24" D x 42" W x 72" W x 30" D x 1" H**

**Worksurfaces also available in one of the melamine or laminate options found on page 46. Call for pricing.**



**Worksurface, Corner (Radius)**

**24" D x 42" W x 72" W x 30" D x 1" H**

**Worksurfaces also available in one of the melamine or laminate options found on page 46. Call for pricing.**



**Worksurface, Rectangular**

**30" D x 72" W x 1" H**

**Worksurfaces also available in one of the melamine or laminate options found on page 46. Call for pricing.**



# Supplemental Furniture & Accessories





# Personal Modifications



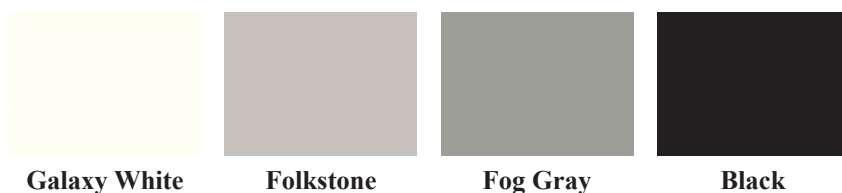
Please visit us online at [uci.utah.gov](http://uci.utah.gov) to see all that UCI has to offer!

# Personal Modifications

## Wood, Stain, Melamine, & Laminate

		STAIN OPTIONS						
		Natural	Fruitwood	Medium	Burnt Umber	Dark	Victorian	Espresso
WOOD OPTIONS	Oak							
	WALNUT							
	CHERRY							
	MAPLE		<p>Each wood species offers a different texture and grain. Minor variations in finish color and value may occur due to the natural characteristics of wood. UCI uses only the highest quality furniture grade stains and finishes in producing furniture. UCI carefully selects all materials used in every product, ensuring a commercially acceptable color and finish. However, it is possible for light and time to alter the color of wood and stain. The stains represented here are similar to the actual product. If you want to see examples of finished furniture or if you have questions about matching finishes to your existing furniture, please call (801) 522-7931.</p>					

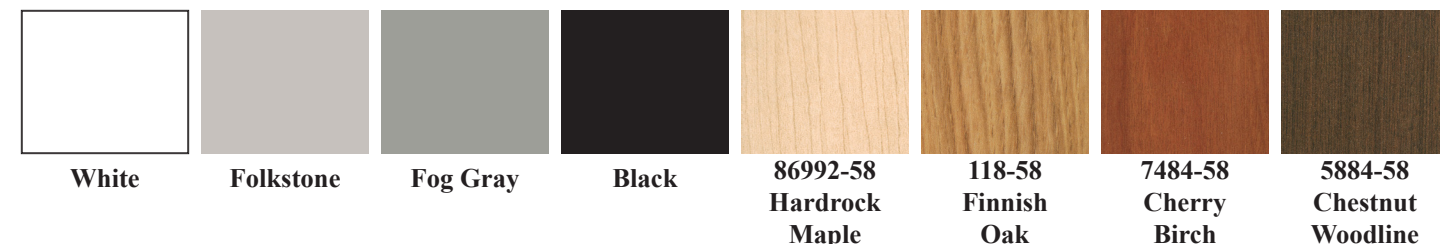
### MELAMINE



Melamine is a great alternative to our wood/stain options if you aren't partial to the traditional look of wood. In addition, melamine is more cost effective.

The colors shown here are merely an approximation of the appearance of melamine; the actual melamine will vary from what is graphically represented here.

### LAMINATE



Laminate is a great option for the worksurface of your desk if you would prefer a style or color beyond what wood/stain has to offer. (Please note that any laminate selection you make is subject to availability.)

Please contact us or visit our website for current prices and product availability.



# TERMS & CONDITIONS

## PRODUCT DESIGN

Utah Correctional Industries reserves the right to make changes in design and construction or discontinue products without prior notice.

## PRICING

In accordance with the State Us Law (63G-6a-804 Purchase of prison industry goods.), UCI updates all catalogs every year (on or before July 1) and updates/revises them as necessary throughout the year. However, due to frequent fluctuations in the cost of raw materials, pricing is subject to change without notice. Quotes are valid for 14 days and will need to be re-quoted if signed approval is received more than 14 days after the original quote date.

## AVAILABILITY

Items are normally available within 6-8 weeks. If no specific date is requested, we will assign the best possible ship date available on a made-to-order basis. Contact our Customer Service department for specific availability.

## ORDER CHANGES

UCI does not usually accept changes requested after order confirmation. However, we will accept reasonable changes on an order with the following conditions:

- The request for change will be subject to UCI's ability to perform.

- Changes will be subject to additional charges as applicable.

- Changes must be brought to UCI's attention through written notice. Changes may result in rescheduling of delivery time.

## CANCELLATIONS

The acceptance of an order by UCI is final and binding and not subject to cancellation by the customer without written notice to UCI. A cancellation or restocking fee from 30% to 100% of the order may be imposed on cancelled orders.

## DELIVERY AND FREIGHT CHARGES

There may be an additional cost for delivery and installation services depending on your geographical location. Should either of these services be requested or required, all charges incurred will be charged to the "sold to" of the order. Any order requiring "non-dock" or "inside" delivery must specify such on the order.

## DAMAGED MERCHANDISE

UCI cannot guarantee any product stored or set in place in an environment where temperature and humidity are not controlled.

## REPAIR CHARGES

A Customer Service authorization must be secured from UCI prior to UCI incurring repair charges.

## FINISH-COLOR MATCHING

Different wood species offer unique texture and grain. Minor variations occur in finish-color and value due to the natural characteristics of wood.

# Furniture - WARRANTY

Our commitment to your satisfaction does not end with the purchase of UCI products. Utah Correctional Industries warrants furniture purchased from UCI to be free from defect in workmanship (when given normal care and use) for 5 years of single shift use by the original purchaser.

UCI warrants **coverings** (for the original purchaser) to be free of defects in materials and workmanship for 2 years.

UCI will repair or replace (UCI's discretion) items covered under this UCI warranty; providing they are within the terms set in this warranty.

This UCI warranty is valid only if products are given normal & proper use and comply with UCI installation & maintenance instructions. UCI assumes no responsibility for repairs to products sustaining damage resulting from user modification, attachments to a product, misuse, abuse, alteration, or negligent use.

This warranty does not cover the following: damage caused by carrier other than UCI, any material specified by the customer that is not a standard UCI product offering, damage caused by and/or resulting from user modification, or negligent use of the UCI product.

This warranty also does not cover items manufactured by any entity other than UCI. UCI offers multiple products from other manufacturers (monitor arms, CPU holders, etc). Warranties for these items are specific to their respective manufacturers.

There are no other warranties except as expressly set forth herein; either expressed or implied. We exclude (and will not pay) consequential or incidental damages under this warranty.

UCI guarantees its customers that we will stand behind the workmanship & products produced at UCI and pledge to do everything reasonably possible to solve problems on a timely basis (within the terms of this warranty).

If you have any questions concerning UCI's warranty policy or problems with UCI products, please contact UCI Customer Service at 801-522-7931.

Non-obsolescence Policy: UCI will provide non-obsolescence protection of out-of-warranty furniture and seating by repairing or replacing the obsolete item at a reasonable price.

# Task Seating



Please visit us online at [uci.utah.gov](http://uci.utah.gov) to see all that UCI has to offer!



# Task Seating



### Alt 3 Conference Chair

**Seat Dimensions:**

18.5" W 17.5" - 18" D 16.25" - 19.5" H

**Overall Dimensions:**

24" W 24" D 35.25" - 38.5" H

The seat of the Alt 3 Conference Chair is available in any of the fabrics found on pages 73-83. The back of the Alt 3 Conference Chair is available in these 3 fabrics.



Black Mesh



Champagne Mesh



Gray Mesh



### Alt 3 Fabric Task Chair

Aluminum Base & Arms

Aluminum Base & Arms & Headrest

**Seat Dimensions:**

18" W 15.5" - 18" D 16.25" - 20.75" H

**Overall Dimensions:**

26" W 26" D 39.5" - 44" H

### Alt 3 Fabric Task Chair

Black Base & Arms

Standard Base, Arms, & Headrest

**Seat Dimensions:**

18" W 15.5" - 18" D 16.25" - 20.75" H

**Overall Dimensions:**

26" W 26" D 39.5" - 44" H



The Alt 3 Fabric Task Chair comes standard in the following fabrics.  
The Alt 3 Fabric Task Chair can be upholstered in any UCI fabric for an additional \$30.



Black Leather  
(add \$75)



Blue Lagoon



Forest



Gunmetal



Merlot



Midnight



Mustard Seed



Periwinkle



Russet



### Alt 3 Mesh Task Chair

Adjustable Arms & Headrest

**Seat Dimensions:**

18" W 17.25" - 19.75" D 17" - 21.75" H

**Overall Dimensions:**

26" (27" w/Arms) W 26" D 38.75" - 43.5" H

### Alt 3 Mesh Task Chair

Armless

**Seat Dimensions:**

18" W 17.25" - 19.75" D 17" - 21.75" H

**Overall Dimensions:**

26" (27" w/Arms) W 26" D 38.75" - 43.5" H



A "Lumbar Back" can be added to Alt3 Mesh seating for \$75.



### Alt 3 Mesh Task Chair

Fixed or Adjustable Arms

**Seat Dimensions:**

18" W 17.25" - 19.75" D 17" - 21.75" H

**Overall Dimensions:**

26" (27" w/Arms) W 26" D 38.75" - 43.5" H

The seat of the Alt 3 Mesh Task Chair is available in any of the fabrics found on pages 73-83. The back of the Alt 3 Mesh Task Chair is available in these 3 fabrics.



Black Mesh



Champagne Mesh



Gray Mesh



### Alto High-Back Task Chair

Fixed Executive Loop Arms

**Seat Dimensions:**

20.5" W 19.9" D 17" - 21.5" H

**Back Dimensions:**

18.5" W 34.7" H

**Overall Dimensions:**

25.2" W 35.5" D 45.9" - 50.3" H

### Alto Mid-Back Task Chair

Fixed Executive Loop Arms

**Seat Dimensions:**

19.2" W 18" D 16" - 19.8" H

**Back Dimensions:**

18.7" W 24.5" H

**Overall Dimensions:**

25.2" W 28.7" D 39.3" - 43.2" H



ALL Alto Seating comes standard in black faux leather. Also available in brown faux leather; call for pricing.

# Task Seating



**Breathe Jr. Task Chair**  
Adjustable Arms  
**Seat Dimensions:**  
19.2" W " D 17" - 22" H  
**Back Dimensions:**  
20" W 20" H  
**Overall Dimensions:**  
27-1/8" W 25" D 37" - 42" H

**Breathe Jr. Task Chair**  
Armless  
**Seat Dimensions:**  
20.5" W 19.5" D 17" - 22" H  
**Back Dimensions:**  
20" W 20" H  
**Overall Dimensions:**  
22.75" W 25" D 37" - 42" H



**Breathe Mesh Chair**  
Adjustable Arms  
**Seat Dimensions:**  
21-5/8" W 19.5" D 18" - 21" H  
**Back Dimensions:**  
22-5/8" W 24" H  
**Overall Dimensions:**  
27.5" W 25" D 41.25" - 44.25" H

**Breathe Mesh chairs have a mesh seat  
NOT a foam/padded seat.**

**Breathe Mesh Chair**  
Adjustable Arms & Headrest  
**Seat Dimensions:**  
21-5/8" W 19.5" D 18" - 21" H  
**Back Dimensions:**  
22-5/8" W 24" H  
**Overall Dimensions:**  
27.5" W 25" D 47.5" - 53.5" H



**Breathe Mesh Chair**  
Armless  
**Seat Dimensions:**  
21-5/8" W 19.5" D 18" - 21" H  
**Back Dimensions:**  
22-5/8" W 24" H  
**Overall Dimensions:**  
22.75" W 25" D 41.25" - 44.25" H

**Breathe Task Chair**  
Adjustable Arms  
**Seat Dimensions:**  
21-5/8" W 19.5" D 18" - 21" H  
**Back Dimensions:**  
22-5/8" W 24" H  
**Overall Dimensions:**  
27.5" W 25" D 41.25" - 44.25" H



**Breathe Task Chair**  
Adjustable Arms & Headrest  
**Seat Dimensions:**  
21-5/8" W 19.5" D 18" - 21" H  
**Back Dimensions:**  
22-5/8" W 24" H  
**Overall Dimensions:**  
27.5" W 25" D 47.5" - 53.5" H

**The seat on ALL Breathe seating comes standard in black mesh, but can be changed to any catalog fabric for \$30.**

**Breathe Task Chair**  
Armless  
**Seat Dimensions:**  
21-5/8" W 19.5" D 18" - 21" H  
**Back Dimensions:**  
22-5/8" W 24" H  
**Overall Dimensions:**  
22-5/8" W 25" D 47.5" - 53.5" H



**Dana High-Back Task Chair**  
Black Embossed Loop Arms  
**Seat Dimensions:**  
20" W x 19" D  
**Overall Dimensions:**  
26" W x 28" D x 39-44" H

**The Dana High-Back Task Chair comes standard in black bonded leather.**

**Danube Task Chair**  
Adjustable Arms & Removable Headrest  
**Seat Dimensions:**  
21.5" W 19.5" D 18.5" - 23.5" H  
**Overall Dimensions:**  
27" W 27" D 37" - 42" H

**The Danube Task Chair comes standard in black mesh.  
The Danube Task Chair has a weight capacity of 275 lbs.**



# Task Seating



**Delta Conference Chair  
Aluminum Arms & Base**

**Seat Dimensions:**  
21.5" W 18.25" D 18" - 22" H  
**Overall Dimensions:**  
27" W 22.5" D 43.5" - 47.75" H

**Delta Conference Chair  
Black Arms & Base**  
**Seat Dimensions:**  
21.5" W 18.25" D 18" - 22" H  
**Overall Dimensions:**  
27" W 22.5" D 43.5" - 47.75" H



**Delta seating comes standard in Black Faux Leather.  
An embroidered logo can be added to the headrest of Delta seating (call for pricing).**



**Diffrient Smart Task Chair  
Adjustable Arms**  
**Seat Dimensions:**  
19.29" W 16.25" D 16.5" - 20.75" H  
**Overall Dimensions:**  
26.5" W 26" D 39" - 43.25" H

**Diffrient World Task Chair  
Adjustable Arms**  
**Seat Dimensions:**  
20.2" W 15.7" - 18.25" D 15.63" - 20.75" H  
**Overall Dimensions:**  
25.75" W 25" D 35.625" - 40.75" H



**Diffrient seating is rated up to 400 lbs.  
Diffrient seating comes standard in black mesh back, black fabric seat, black arms, black frame, and black base.**



**Eclipse (Total Eclipse 24/7)  
High-Back Task Chair  
(w/Adjustable Height Arms)**  
**Seat Dimensions:**  
23" W x 18" D  
**Overall Dimensions:**  
26" W x 24" D x 37-44" H

**The Total Eclipse 24/7 is rated at 500 lbs. Eclipse seating is available in any of the fabrics found on pages 73-83. A logo can be added to the Eclipse; call for pricing.**



**Freedom Task Chair  
Adjustable Arms**  
**Seat Dimensions:**  
21" W 17.4" - 19.85" D 16.125" - 20.25" H  
**Overall Dimensions:**  
26.75" W 25" D 34.625" - 41.775" H

**Freedom Task Chair  
Adjustable Arms & Head Rest**  
**Seat Dimensions:**  
21" W 17.4" - 19.85" D 16.125" - 20.25" H  
**Overall Dimensions:**  
26.75" W 25" D 42.375" - 54.275" H



**Freedom seating is rated up to 400 lbs & comes standard in black, Cord4 fabric (back, seat, arms, frame, and base).**



**Griffin Conference Chair  
Fixed C-Arms (black, bonded leather)**  
**Seat Dimensions:**  
20.5" W x 20.75" D  
**Overall Dimensions:**  
25.5" W x 28.5" D x 40-44" H

**The Griffin Conference Chair comes standard in black bonded leather and has a chrome steel base.**

**Ithaca Task Chair  
Adjustable Arms**  
**Seat Dimensions:**  
20.5" W 18" D 17.25" - 22.25" H  
**Overall Dimensions:**  
25" W 18" D 37" - 45" H



**The Ithaca Task Chair is available in any of the fabrics found on pages 73-83. A logo can be added to the Ithaca Task Chair; call for pricing. A Seat Slider can be added to the Ithaca Task Chair for \$30.**



# Task Seating



**Ithaca Task Stool**  
Adjustable T-Arms  
Armless

**Seat Dimensions:**  
20.5" W 18" D 24" - 34" H  
**Overall Dimensions:**  
25" W 18" D 43.5" - 56.5" H

The Ithaca Task Stool is available in any of the fabrics found on pages 73-83. A logo can be added to the Ithaca Task Stool; call for pricing. A Seat Slider can be added to the Ithaca Task Stool for \$30.

**Ithaca Ultra High Back**  
Adjustable T-Arms

**Seat Dimensions:**  
20.5" W 18" - 20" D 17.25" - 22.25" H  
**Overall Dimensions:**  
26" W 18" - 20" D 41.5" - 46.5" H



Ithaca Ultra seating comes standard with a Seat Slider. The back on ALL Ithaca Ultra seating comes standard in black and can not be re-upholstered. The seat on the Ithaca Ultra is available in any of the fabrics found on pages 73-83.



**Ithaca Ultra High Back**  
Adjustable T-Arms & Head Rest

**Seat Dimensions:**  
20.5" W 18" - 20" D 17.25" - 22.25" H  
**Overall Dimensions:**  
26" W 18" - 20" D 46" - 55" H

**Ithaca Ultra High Back**  
Armless

**Seat Dimensions:**  
20.5" W 18" - 20" D 17.25" - 22.25" H  
**Overall Dimensions:**  
26" W 18" - 20" D 41.5" - 46.5" H



**Ithaca Ultra Mid Back**  
Fixed Loop Arms

**Seat Dimensions:**  
20.5" W 18" - 20.5" D 17.25" - 22.25" H  
**Overall Dimensions:**  
26" W 18" - 20" D 35.5" - 43.5" H

**Ithaca Ultra Mid Back**  
Adjustable T-Arms

**Seat Dimensions:**  
20.5" W 18" - 20.5" D 17.25" - 22.25" H  
**Overall Dimensions:**  
26" W 18" - 20" D 35.5" - 43.5" H



**Ithaca Ultra Mid Back**  
Armless

**Seat Dimensions:**  
20.5" W 18" - 20.5" D 17.25" - 22.25" H  
**Overall Dimensions:**  
26" W 18" - 20" D 35.5" - 43.5" H

**Ithaca Ultra Stool**  
Adjustable T-Arms  
Armless

**Seat Dimensions:**  
20.5" W 18" - 20.5" D 22.25" - 30" H  
**Overall Dimensions:**  
26" W 18" - 20.5" D 43" - 57" H



Ithaca Ultra seating comes standard with a Seat Slider. The back on ALL Ithaca Ultra seating comes standard in black and can not be re-upholstered. The seat on the Ithaca Ultra is available in any of the fabrics found on pages 73-83.



**Liberty Task Chair**

**Seat Dimensions:**  
21" W 16.5" - 18.75" D 16.6" - 20.9" H  
**Overall Dimensions:**  
26.5" W 25" D 39.25" - 43.625" H

The Liberty Task Chair comes standard in black (mesh back, seat, arms, frame, and base). For additional options, please visit [humanscale.com](http://humanscale.com). Additional charges will apply for any changes to the standard black option.

**Maximus Heavy Duty Task Chair**

**Seat Dimensions:**  
23.8" W 19" D 20" - 23.6" H  
**Overall Dimensions:**  
29.1" W 29.1" D 42" - 46" H



The Maximus Heavy Duty Task Chair comes upholstered in Vinyl, Black Bonded Leather and has a Big & Tall Gas Lift with a 500 lb. rating.

# Task Seating



**Pilot Stool**  
**Adjustable T-Arms**  
**Armless**

**Seat Dimensions:**  
21" W 20" D 23" - 29" H  
**Overall Dimensions:**  
26.5" W 46" - 59" H

**Pilot XL**  
**Adjustable Loop Arm**  
**Armless (not pictured)**

**Seat Dimensions:**  
24" W 18" - 20.5" D 18" - 23" H  
**Overall Dimensions:**  
26.5" W 17" - 19.5" D 43" - 52" H



**ALL Pilot seating is available in any of the fabrics found on pages 73-83.**  
**A logo can be added to Pilot seating; call for pricing.**



**Pilot XL**  
**Adjustable T-Arms**  
**Fully Adjustable T-Arms (not pictured)**

**Seat Dimensions:**  
24" W 18" - 20.5" D 18" - 23" H  
**Overall Dimensions:**  
26.5" W 17" - 19.5" D 43" - 52" H

**Pilot XL**  
**Breakaway T-Arms**

**Seat Dimensions:**  
24" W 18" - 20.5" D 18" - 23" H  
**Overall Dimensions:**  
26.5" W 17" - 19.5" D 43" - 52" H



**A logo can be added to Pilot seating; call for pricing.**



**Pilot XL**  
**Fixed Loop Arms**

**Seat Dimensions:**  
24" W 18" - 20.5" D 18" - 23" H  
**Overall Dimensions:**  
26.5" W 17" - 19.5" D 43" - 52" H

**Pilot XL Stool**  
**Adjustable T-Arms**  
**Armless (not pictured)**

**Seat Dimensions:**  
24" W 18" - 20.5" D 23" - 29.5" H  
**Overall Dimensions:**  
26.5" W 17" - 19.5" D 46" - 59" H



**Glides can be substituted for Casters on ALL Pilot seating with no price change. A logo can be added to Pilot seating; call for pricing.**

**Pilot XL seating is rated up to 400 lbs. ALL Pilot seating is available in any of the fabrics found on pages 73-83. A logo can be added to Pilot seating; call for pricing.**



**Viper Magnum Task Chair**

**Seat Dimensions:**  
23" W 21" D 16" - 21" H  
**Overall Dimensions:**  
26.5" W 27" D 38" - 43" H

**Viper Magnum Task Chair**  
**Head Rest**

**Seat Dimensions:**  
23" W 21" D 16" - 21" H  
**Overall Dimensions:**  
26.5" W 27" D 48" - 53" H



**Viper Magnum seating is rated up to 500 lbs.**



**Viper Task Chair**

**Seat Dimensions:**  
23" W 21" D 16" - 20" H  
**Overall Dimensions:**  
26.5" W 27" D 38" - 42" H

**ALL Viper seating comes standard in black mesh. Additional charges will apply if a different fabric is selected. Call for pricing.**

**Viper Task Chair**  
**Head Rest**

**Seat Dimensions:**  
23" W 21" D 16" - 20" H  
**Overall Dimensions:**  
26.5" W 27" D 48" - 52" H



# Side Seating



Please visit us online at [uci.utah.gov](http://uci.utah.gov) to see all that UCI has to offer!



# Side Seating



**Attain 4-Leg Side Chair with Casters**  
Upholstered Seat, Poly Back  
Armless  
With Arms (not pictured)

**Seat Height:** 17.5"  
**Overall Dimensions:** 17.25" W 33.5" H

**Attain 4-Leg Side Chair with Glides**  
Upholstered Seat, Poly Back  
Armless  
With Arms (not pictured)

**Overall Dimensions:** 17.25" W 33.5" H  
**Seat Height:** 17.5"



**Attain seating is available is Upholstered or Poly (seat & back). Call for options.**



**Breathe Sled Base Side Chair**  
(Armless, Mesh Back, Foam Seat)  
(with Arms, Mesh Back, Foam Seat)  
(with Arms, Mesh Back, Foam Seat, Headrest)

**Overall Dimensions:**  
22.62" W 25" D 33" H

**The Breathe Sled Base Side Chair comes standard in black mesh, but can be changed to any catalog fabric for \$30.**

**Cinto 4-Leg Side Chair**  
Armless (Black or Silver Frame w/Glides)  
Fixed Arms (Black or Silver Frame w/Glides)



**Seat Dimensions:**  
20" W 16" D 16.5" H  
**Overall Dimensions:**  
24" W 22" D 35" H

**Casters can be added to the Cinto 4-Leg Side Chair for \$20. Poly color options are: Black, White, Gray, Taupe, Light Gray, Yellow, Green, Light Blue, Blue, & Red.**



**Diffrient Occasional Liberty Side Chair**

**Overall Dimensions:**  
23.23" W 21.19" D 36.68" H

**The back on the Diffrient Occasional Liberty side chair comes in Black, Dark Gray, or Light Gray. The seat on the Diffrient Occasional Liberty side chair comes in several options - call for details.**

**Eddy Beam Seating**  
Poly Seat & Back  
3-Seat - Shared Arms



**Overall Dimensions:**  
66" W 25" D 33" H

**Eddy Beam seating is available in many configurations; please contact us for details. ALL Upholstered Eddy seating is available in any of the fabrics found on pages 73-83.**



**Eddy Beam Seating**  
Upholstered Seat & Back  
2-Seat - Center Table w/Arms

**Overall Dimensions:**  
66" W 25" D 33" H

**Eddy Beam seating is available in many configurations; please contact us for details. ALL Upholstered Eddy seating is available in any of the fabrics found on pages 73-83.**

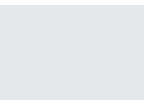
## Eddy Poly Color Options



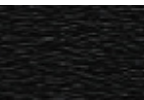
**021**  
Orange



**022**  
Aqua



**024**  
Ice



**200**  
Black



**700**  
Gray



**800**  
Red



**900**  
Blue

# Side Seating



**Getti 4-Post Side Chair**  
**Upholstered Seat & Back**  
**Armless**  
**With Arms**

**Seat Dimensions:**  
 18" W 17" D 18" H  
**Overall Dimensions:**  
 18" W 17" D 32" H

**The Getti 4-Post Side Chair is manufactured with a black, powder-coated tubular metal frame and comes with glides for the legs.**

**The Getti 4-Post Side Chair comes standard in black polyester fabric, but can be re-upholstered in any of the fabrics found on pages 73-83 for an additional \$30.**



**Ithaca Ultra Sled Base**  
**Armless**  
**Fixed Loop Arms**  
**Height & Width Adjustable Arms**

**Seat Dimensions:**  
 20.5" W 19" D 18.5" H  
**Overall Dimensions:**  
 24" W 19" D 41.5" H

**The back on ALL Ithaca Ultra seating comes standard in black and can not be re-upholstered.**

**The seat on the Ithaca Ultra is available in any of the fabrics found on pages 73-83.**



**Navigator "On The Go"**  
**Upholstered Seat & Poly Back**  
**Armless**

**Seat Dimensions:**  
 17.25" W 18.5" D 18" H  
**Overall Dimensions:**  
 23.5" W 24.25" D 32.25" H

**Navigator "On The Go"**  
**Upholstered Seat & Poly Back**  
**Arms**

**Seat Dimensions:**  
 17.25" W 18.5" D 18" H  
**Overall Dimensions:**  
 23.5" W 24.25" D 32.25" H



**Navigator "On The Go"**  
**Upholstered Seat & Back**  
**Armless**

**Seat Dimensions:**  
 17.25" W 18.5" D 18" H  
**Overall Dimensions:**  
 23.5" W 24.25" D 32.25" H

**Navigator "On The Go"**  
**Upholstered Seat & Back**  
**Arms**

**Seat Dimensions:**  
 17.25" W 18.5" D 18" H  
**Overall Dimensions:**  
 23.5" W 24.25" D 32.25" H



**Navigator "On The Go"**  
**Upholstered Seat & Poly Back**  
**Tablet Arm**  
**(Must specify R or L side.)**

**Seat Dimensions:**  
 17.25" W 18.5" D 18" H  
**Overall Dimensions:**  
 23.5" W 24.25" D 32.25" H

**Navigator Air Nesting Chair**  
**Upholstered Seat & Mesh Back**  
**Armless & Carpet Casters**  
**With Arms & Carpet Casters**

**Seat Dimensions:**  
 17" W 18.5" D 18" H  
**Overall Dimensions:**  
 23.875" W 24.25" D 33.5" H



**The backs on all Navigator Air seating come only in Black or Gray Mesh, but the frame can be found in any of the colors found on pages 84-85. ALL Poly Navigator seating is available in any of the frame/poly colors found on pages 84-85. ALL Upholstered Navigator seating is available in any of the fabrics found on pages 73-83.**

# Side Seating



**Navigator Air Stack 4-Leg  
Upholstered Seat & Mesh Back  
Armless  
With Arms**

**Seat Dimensions:**  
18.75" W 16"-19" D 16"-20.75" H  
**Overall Dimensions:**  
28" W 22.5"-25" D 36.5"-41" H

**Navigator Air Stack Sled Base  
Upholstered Seat & Mesh Back  
Armless  
With Arms**

**Seat Dimensions:**  
17" W 18.5" D 18" H  
**Overall Dimensions:**  
23.5" W 23.75" D 34" H



**Navigator Air Stool  
Upholstered Seat & Mesh Back  
Armless & Carpet Casters  
With Arms & Carpet Casters**

**Seat Dimensions:**  
17" W 18.5" D 21"-28.5" H  
**Overall Dimensions:**  
27.5" W 26.5" D 36.5"-44" H

**Navigator Air Task  
Upholstered Seat & Mesh Back  
Armless & Carpet Casters  
With Arms & Carpet Casters**

**Seat Dimensions:**  
17" W 18.5" D 18"-23" H  
**Overall Dimensions:**  
26.5" W 26.5" D 33.5"-38.5" H



**The backs on all Navigator Air seating comes in Black or Gray Mesh, but the frame is only available in black.  
ALL Upholstered Navigator seating is available in any of the fabrics found on pages 73-83.**



**Occupy Stool  
Upholstered Seat & Mesh Back  
Armless  
With Arms**

**Seat Height:**  
30"

**The back on the Occupy Stool is available with either a Cool Grey or a Black mesh insert. The seat on the Occupy Stool is available in any of the fabrics found on pages 73-83.**



**Piper Stacker  
Poly Seat & Back  
Armless**

**Seat Height:**  
17.5" H  
**Seat Dimensions:**  
18" W 17.5" D  
**Overall Dimensions:**  
19.25" W 21.25" D

**Piper Stacker  
Upholstered Seat & Back  
Armless**

**Seat Height:**  
17.5" H  
**Seat Dimensions:**  
18" W 17.5" D  
**Overall Dimensions:**  
19.25" W 21.25" D



**ALL Poly Piper seating is available in any of the frame/poly colors found on pages 84-85.  
ALL Upholstered Piper seating is available in any of the fabrics found on pages 73-83.**



# Side Seating



**Piper Stacker**  
Upholstered Seat & Poly Back  
Armless

**Seat Dimensions:**  
18" W 17.5" D x 17.5" H  
**Overall Dimensions:**  
19.25" W 21.25" D

**Piper Stacker, Chair Dolly**  
(Must specify whether it is for  
Upholstered or Poly chairs.)



**ALL Poly Piper seating is available in any of the frame/poly colors found on pages 84-85.**  
**ALL Upholstered Piper seating is available in any of the fabrics found on pages 73-83.**



**Rigger4 4-Leg Chair w/Glides**  
Mesh, Poly, or Upholstered Seat  
& Mesh or Poly Back  
Armless | With Arms

**Seat Dimensions:**  
17.5" W x 17.75" D x 17.75" H  
**Overall Dimensions:**  
20.5" W x 21.75" D x 32.25" H

**The Rigger4 4-Leg Chair is available with glides or casters.**

**Rigger4 Café Stool**  
Mesh, Poly, or Upholstered Seat  
& Mesh or Poly Back  
Armless Only

**24" Seat Height**

**30" Seat Height**



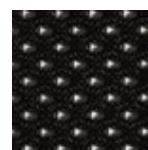
**The mesh or poly on Rigger4 seating is available in Stone Grey, White, or Black. The seat on Rigger4 seating available in any of the fabrics found on pages 73-83.**



**Stone Grey**



**White**



**Black**



**Rigger4 Sled-Base Chair (armless)**

**Mesh, Poly, or Upholstered Seat  
& Poly Back**

**Mesh, Poly, or Upholstered Seat  
& Mesh Back**

**Seat Dimensions:**  
17.5" W 17.75" D 17.75" H  
**Overall Dimensions:**  
19.75" W 21.5" D 32.25" H



**Sitka Sled Base Side Chair**  
Upholstered Seat & Poly Back  
Armless  
With Arms

**Seat Height:**  
17.75" (Poly) / 18.75" (Uph)  
**Seat Dimensions:**  
23.5" W x 18.31" D  
**Overall Dimensions:**  
23.5" W x 27.38" D x 32.63" H

**Sitka seating is available in Upholstered or Poly (seat & back).  
Call for options.**

**Stilo 4-Post Side Chair**  
Upholstered Seat & Black Mesh Back  
w/Casters  
w/Glides for Soft Floor

**Seat Height:**  
18"  
**Overall Dimensions:**  
21.5" W x 26" D x 36" H



**The Stilo 4-Post Side Chair is available in any of the fabrics found on pages 73-83.**

# Side Seating



**Tec Line Physician's Stool**  
**Poly Seat**  
**Desk Height (16"-21" H)**  
**Counter Height (19"-26" H)**  
**Bar Height (23"-32" H)**

**Tec Line Stool**  
**Poly Seat & Back**  
**Medium Height**  
**Tall Height**  
**Seat Dimensions:**  
17.75" W 17" D  
**Seat Height:**  
19"-26" (Medium)  
23"-32" (Tall)



**The seat on the Tec Line Physician's Stool can be upholstered in any of the fabrics found on pages 73-83.**  
**Both Tec Line Stools comes standard in black poly.**





# Lounge & Wood Seating



Please visit us online at [uci.utah.gov](http://uci.utah.gov) to see all that UCI has to offer!



# Lounge & Wood Seating

**Multiple wood options & sizes available; contact us for details.**



**Adult Rocking Chair**

**Seat Dimensions:**  
20.25" W x 17.5" D  
**Overall Dimensions:**  
22.75" W x 28.875" D x 42.4375" H

**Aspen Bench**



**Seat Dimensions:**  
43.5" W x 16.875" D x 18.5" H  
**Overall Dimensions:**  
43.5" W x 22.125" D x 37.25" H



**Aspen Chair**

**Seat Dimensions:**  
18.5" W x 16.5" D x 18.75" H  
**Overall Dimensions:**  
18.5" W x 23.125" D x 36.75" H

**The Adult Rocking Chair, the Aspen Bench, and the Aspen Chair are available in any of the Wood/Stain options found on page 72. The Adult Rocking Chair can also be customized with laser engraved backrest panels (top & bottom panels) for an additional \$75.00 (per panel).**



**B-Sharp Stacker Chair**

**Seat Dimensions:**  
19.25" W x 20" D x 19" H  
**Overall Dimensions:**  
23.25" W x 22.75" D x 33.25" H

**The B-Sharp Stacker Chair is available in any of the fabrics found on pages 73-83.**

**Campus Lounge Chair**



**Outside Dimensions:**  
27.5" W x 29.625" D x 24" H  
**Inside Dimensions:**  
24.5" W x 21.5" D x 18" H

**ALL Campus seating is available in any of the fabrics found on pages 73-83.**



**Campus Love Seat**

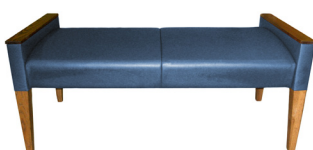
**Outside Dimensions:**  
52" W x 29.625" D x 24" H  
**Inside Dimensions:**  
49" W x 21.5" D x 18" H

**ALL Campus seating is available in any of the fabrics found on pages 73-83.**

**Campus Sofa**



**Outside Dimensions:**  
76.5" W x 29.625" D x 24" H  
**Inside Dimensions:**  
73.5" W x 21.5" D x 18" H



**Canyon 2-Seat Bench**

**Outside Dimensions:**  
48.5" W x 24" D x 24.875" H  
**Inside Dimensions:**  
44" W x 24" D x 20.625" H

**ALL Canyon seating is available in any of the fabrics found on pages 73-83.**

**Canyon Lounge Chair**



**Outside Dimensions:**  
24.5" W x 24" D x 34.6875" H  
**Seat Dimensions:**  
20" W x 19.375" D x 20.625" H

**Multiple wood options & sizes  
available; contact us for details.**

## Lounge & Wood Seating



**Canyon Love Seat**

**Outside Dimensions:**  
46.75" W x 24" D x 34.6875" H  
**Seat Dimensions:**  
20" W x 19.375" D x 20.625" H

**Canyon Sofa**

**Outside Dimensions:**  
69" W x 24" D x 34.6875" H  
**Seat Dimensions:**  
20" W x 19.375" D x 20.625" H



**ALL Canyon seating is available in any of the fabrics found on pages 73-83.**



**Futon Sofa/Bed**

**Seat Dimensions:**  
81.75" W x 24.5" D  
**Overall Dimensions:**  
82.125" W x 32" D x 32.5" H

**The Futon Sofa/Bed is available in any of the fabrics found on pages 73-83.**

**Marcel Side Chair**

**Seat Dimensions:**  
18.5" W x 19.5" D x 17.5" H  
**Overall Dimensions:**  
32.5" W x 23" D x 19" H



**The Marcel Side Chair is available in any of the fabrics found on pages 73-83.**



**Midway Lounge Chair**

**Outside Dimensions:**  
35" W x 35" D x 33" H  
**Inside Dimensions:**  
20.5" W x 22.875" D x 16.875" H  
**Arm Height:**  
26.5" H

**Midway Love Seat**

**Outside Dimensions:**  
56.5" W x 35" D x 33" H  
**Inside Dimensions:**  
41" W x 22.875" D x 16.875" H  
**Arm Height:**  
26.5" H



**Midway Sofa**

**Outside Dimensions:**  
77" W x 35" D x 33" H  
**Inside Dimensions:**  
61.5" W x 22.875" D x 16.875" H  
**Arm Height:**  
26.5" H

**ALL Midway seating is available in any of the fabrics found on pages 73-83.**



**Modular Lounge Chair**

**Modular Love Seat**



**ALL Modular seating is available in any of the fabrics found on pages 73-83.**

# Lounge & Wood Seating

**Multiple wood options & sizes  
available; contact us for details.**



**Modular Sofa**

**ALL Modular seating is available in any of the fabrics found on pages 73-83.**

**Monarch Lounge Chair**



**Seat Dimensions:**  
20.25" W x 19.75" D x 19" H  
**Overall Dimensions:**  
23.75" W x 22" D x 32.5" H

**ALL Monarch seating is available in any of the fabrics found on pages 73-83.**



**Monarch Love Seat**

**Seat Dimensions:**  
20.25" W x 19.75" D x 19" H  
**Overall Dimensions:**  
45.75" W x 22" D x 32.5" H

**ALL Monarch seating is available in any of the fabrics found on pages 73-83.**

**Monarch Sofa**



**Seat Dimensions:**  
20.25" W x 19.75" D x 19" H  
**Overall Dimensions:**  
67.75" W x 22" D x 32.5" H



**Nephi Crew 4-Leg  
Armless**

**Seat Dimensions:**  
20.25" W x 19.5" D x 18" H  
**Overall Dimensions:**  
22.75" W x 20" D x 32" H

**Nephi Crew 4-Leg  
S-Arms**



**Seat Dimensions:**  
20.25" W x 19.5" D x 18" H  
**Overall Dimensions:**  
22.75" W x 20.25" D x 32" H



**Nephi Crew Sled Base  
Armless**

**Seat Dimensions:**  
20.25" W x 19.5" D x 18" H  
**Overall Dimensions:**  
22.75" W x 20" D x 32" H

**Nephi Crew Sled Base  
S-Arms**



**Seat Dimensions:**  
20.25" W x 19.5" D x 18" H  
**Overall Dimensions:**  
22.75" W x 20.25" D x 32" H



**Nephi Crew Sled Base  
(2-Seat Multi) - S-Arms**

**Seat Dimensions:**  
  
**Overall Dimensions:**  
65.75" W x 20.25" D x 32" H

**Nephi Crew Sled Base  
(3-Seat Multi) - Armless**



**Seat Dimensions:**  
  
**Overall Dimensions:**  
87.25" W x 20.25" D x 32" H

**ALL Nephi seating is available in any of the fabrics found on pages 73-83. Table placement must be indicated for Nephi Multi seating.**



**Multiple wood options & sizes  
available; contact us for details.**

## Lounge & Wood Seating



**Nephi Crew Table**

**Overall Dimensions:**  
22.75" W x 19" D x 16" H

**Nephi Lounge 4-Leg  
S-Arms**

**Seat Dimensions:**  
25.125" W x 21.5" D x 18" H  
**Overall Dimensions:**  
22.75" W x 20" D x 33.75" H



**Nephi Lounge Sled Base  
S-Arms**

**Seat Dimensions:**  
25.125" W x 21.5" D x 18" H  
**Overall Dimensions:**  
27.625" W x 28.5" D x 33.75" H

**Nephi Love Seat 4-Leg  
S-Arms**

**Seat Dimensions:**  
49.5" W x 21.5" D x 18" H  
**Overall Dimensions:**  
52" W x 28.5" D x 33.75" H



**ALL Nephi seating is available in any of the fabrics found on pages 73-83.**



**Nephi Love Seat Sled Base  
S-Arms**

**Seat Dimensions:**  
49.5" W x 21.5" D x 18" H  
**Overall Dimensions:**  
52" W x 28.5" D x 33.75" H

**Nephi Sofa 4-Leg  
S-Arms**

**Seat Dimensions:**  
74" W x 21.5" D x 18" H  
**Overall Dimensions:**  
76.5" W x 28.5" D x 33.75" H



**Nephi Sofa Sled Base  
S-Arms**

**Seat Dimensions:**  
74" W x 21.5" D x 18" H  
**Overall Dimensions:**  
76.5" W x 28.5" D x 33.75" H

**ALL Nephi seating is available in any of the fabrics found on  
pages 73-83.**



**Overstuff Lounge Chair**

**Seat Dimensions:**  
30" W x 24" D x 18" H  
**Overall Dimensions:**  
42" W x 35" D x 31.75" H

**Overstuff Love Seat**

**Seat Dimensions:**  
54" W x 24" D x 18" H  
**Overall Dimensions:**  
66" W x 35" D x 31.75" H



**ALL Overstuff seating is available in any of the fabrics found on pages 73-83.**

Please visit us online at [uci.utah.gov](http://uci.utah.gov) to see all that UCI has to offer!

# Lounge & Wood Seating

**Multiple wood options & sizes available; contact us for details.**



**Overstuff Sofa**

**Seat Dimensions:**  
72" W x 24" D x 18" H  
**Overall Dimensions:**  
84" W x 35" D x 31.75" H

**Overstuff Plush Lounge Chair**



**Seat Dimensions:**  
30" W x 24" D x 16" H  
**Overall Dimensions:**  
46" W x 37" D x 33.25" H



**Overstuff Plush Love Seat**

**Seat Dimensions:**  
49.5" W x 24" D x 16" H  
**Overall Dimensions:**  
65.5" W x 37" D x 33.25" H

**Overstuff Plush Sofa**



**Seat Dimensions:**  
72" W x 24" D x 16" H  
**Overall Dimensions:**  
88" W x 37" D x 33.25" H

**ALL Overstuff seating is available in any of the fabrics found on pages 73-83.**



**Park City Lounge Chair**

**Seat Dimensions:**  
21.75" W x 19.25" D x 18" H  
**Overall Dimensions:**  
30.25" W x 31.5" D x 33.75" H

**Park City Love Seat**



**Seat Dimensions:**  
43.75" W x 19.25" D x 18" H  
**Overall Dimensions:**  
52.75" W x 31.5" D x 33.75" H



**Park City Sofa**

**Seat Dimensions:**  
72.25" W x 19.25" D x 18" H  
**Overall Dimensions:**  
81.75" W x 31.5" D x 33.75" H

**ALL Park City seating is available in any of the fabrics found on pages 73-83.**

**Power Docks can be added to ALL Park City seating. Call for pricing.**



**Richmond Guest Chair, Open Arms Non-Tuft**

**Seat Dimensions:**  
19.5" W x 16.5" D x 16" H  
**Overall Dimensions:**  
24.5" W x 26" D x 34.5" H

**Richmond Guest Chair, Panel Arms Non-Tuft**



**Seat Dimensions:**  
19.5" W x 16.5" D x 16" H  
**Overall Dimensions:**  
24.5" W x 26" D x 34.5" H

**ALL Richmond seating is available in any of the fabrics found on pages 73-83.**

Please contact us or visit our website for current prices and product availability.

**Multiple wood options & sizes  
available; contact us for details.**

## Lounge & Wood Seating



**Richmond High-Back Wing Lounge Chair  
Traditional Legs, Diamond Tuft**

**Seat Dimensions:**  
21" W x 20.375" D x 16" H  
**Overall Dimensions:**  
36" W x 37.25" D x 43" H

**Richmond High-Back Wing Lounge Chair  
Traditional Legs, Non-Tuft**

**Seat Dimensions:**  
21" W x 20.5" D x 18.375" H  
**Overall Dimensions:**  
36.75" W x 37.5" D x 43" H



**Richmond Mid-Back Wing Lounge Chair  
Queen Anne Legs, Diamond Tuft**

**Seat Dimensions:**  
19" W x 17" D x 17.25" H  
**Overall Dimensions:**  
29" W x 29.25" D x 44.5" H

**Richmond Mid-Back Wing Lounge Chair  
Queen Anne Legs, Non-Tuft**

**Seat Dimensions:**  
19" W x 17" D x 17.25" H  
**Overall Dimensions:**  
29" W x 29.25" D x 44.5" H



**For all Richmond seating, please specify which color tacks you'd prefer (Brass or Silver).  
If you'd like "Queen Anne Legs" on the Richmond Wing Lounge Chair, add \$200 to the "Traditional Legs" price(s) listed here!  
If you'd like "Traditional Legs" on the Richmond Wing Lounge Chair, subtract \$200 from the "Queen Anne Legs" price(s) listed here!  
ALL Richmond seating is available in any of the fabrics found on pages 73-83.**



**Sheridan High-Back 4-Leg Chair  
Diamond Tuft**

**Seat Dimensions:**  
**Overall Dimensions:**  
25.25" W x 21.5" D x 39" H

**Sheridan High-Back 4-Leg Chair  
Non-Tuft**

**Seat Dimensions:**  
**Overall Dimensions:**  
25.25" W x 21.5" D x 39" H



**Sheridan High-Back Manager Chair  
Diamond Tuft**

**Seat Dimensions:**  
**Overall Dimensions:**

**Sheridan High-Back Manager Chair  
Non-Tuft**

**Seat Dimensions:**  
**Overall Dimensions:**



**ALL Sheridan seating is available in any of the fabrics found on pages 73-83.**

**Arm supports for Sheridan Manager seating are available in Oak\*, Maple, Cherry, or Walnut. Base Caps for Sheridan Manager seating are available only in beech wood, but can be stained in any UCI stain - including "natural".**

Please visit us online at [uci.utah.gov](http://uci.utah.gov) to see all that UCI has to offer!



# Lounge & Wood Seating

Multiple wood options & sizes available; contact us for details.



Sheridan Lounge Chair  
Diamond Tuft

Sheridan Lounge Chair  
Non-Tuft



Sheridan Love Seat  
Diamond Tuft

Sheridan Love Seat  
Non-Tuft



Sheridan Sofa  
Diamond Tuft

Sheridan Sofa, Non-Tuft



For all Sheridan seating, please specify which color tacks you'd prefer (Brass or Silver).  
ALL Sheridan seating is available in any of the fabrics found on pages 73-83.



Sunset Lounge Chair

Sunset Love Seat



Overall Dimensions:  
38" W x 36" D x 36" H  
Arm Height:  
26" H

Overall Dimensions:  
62" W x 36" D x 36" H  
Arm Height:  
26" H



Sunset Sofa

Overall Dimensions:  
81" W x 36" D x 36" H  
Arm Height:  
26" H

ALL Sunset seating is available in any of the fabrics found on pages 73-83.

**Multiple wood options & sizes  
available; contact us for details.**

## Lounge & Wood Seating



**Throw Pillows**

**Dimensions:** 17" x 17"



**Throw Pillows**

**Dimensions:** 17" x 17"

**Throw Pillows are available in any of the fabrics found on pages 73-83.**



**University Lounge Chair**

**Seat Dimensions:**  
23" W x 18.5" D x 16" H  
**Overall Dimensions:**  
30.5" W x 24" D x 33.5" H



**University Love Seat**

**Seat Dimensions:**  
48" W x 18.5" D x 16" H  
**Overall Dimensions:**  
55.25" W x 24" D x 33.5" H



**University Sofa**

**Seat Dimensions:**  
65" W x 18.5" D x 16" H  
**Overall Dimensions:**  
72.5" W x 24" D x 33.5" H

**ALL University seating is available in any of the  
fabrics found on pages 73-83.**



**Valley Bench**

**Seat Dimensions:**  
55" W x 23" D x 18" H  
**Overall Dimensions:**  
60" W x 23" D x 24" H



**Valley Jr. Lounge Chair**

**Seat Dimensions:**  
20" W x 15.5" D x 16.5" H  
**Overall Dimensions:**  
25" W x 25.5" D x 34.25" H



**Valley Lounge Chair**

**Seat Dimensions:**  
23.25" W x 16.75" D x 17" H  
**Overall Dimensions:**  
29.25" W x 29" D x 29.5" H



**Valley Love Seat**

**Seat Dimensions:**  
23.25" W x 16.75" D x 17" H  
**Overall Dimensions:**  
54" W x 28.5" D x 29.5" H

**ALL Valley seating is available in any of the fabrics found on pages 73-83.**

Please visit us online at [uci.utah.gov](http://uci.utah.gov) to see all that UCI has to offer!

# Lounge & Wood Seating

**Multiple wood options & sizes  
available; contact us for details.**



**Child's Canyon Lounge**

**Inside Seat Dimensions:**  
16.75" W x 14" D  
**Overall Dimensions:**  
21.5" W x 20" D x 26" H

**Child's Monarch Lounge Chair**

**Seat Dimensions:**  
**Overall Dimensions:**



**Child's Nephi Crew Rocker**  
**S-Arms**  
Also available Armless (not pictured)

**Armless**

**S-Arms**

**Seat Dimensions:**

**Overall Dimensions:**

**Child's Nephi Crew Sled Base**  
**Armless**  
Also available with S-Arms (not pictured)

**Armless**

**S-Arms**

**Seat Dimensions:**

**Overall Dimensions:**



**ALL Child's seating is available in any of the fabrics found on pages 73-83.**

**The Lead-Time for most Kit chairs is approximately 6 weeks.**  
**The Lead-Time for Richmond & Sheridan seating is approximately 8-12 weeks.**





Please visit us online at [uci.utah.gov](http://uci.utah.gov) to see all that UCI has to offer!



# Wood, Stain, Laminate, & Melamine Options

		STAIN OPTIONS						
		Natural	Fruitwood	Medium	Burnt Umber	Dark	Victorian	Espresso
WOOD OPTIONS	Oak							
	WALNUT							
	CHERRY							
	MAPLE							

Each wood species offers a different texture and grain. Minor variations in finish color and value may occur due to the natural characteristics of wood. UCI uses only the highest quality furniture grade stains and finishes in producing furniture. UCI carefully selects all materials used in every product, ensuring a commercially acceptable color and finish. However, it is possible for light and time to alter the color of wood and stain. The stains represented here are similar to the actual product. If you want to see examples of finished furniture or if you have questions about matching finishes to your existing furniture, please call (801) 522-7931.

# Fabric Samples

Any of the following fabrics or vinyls can be chosen for our chairs (even if a chair comes with a standard fabric from the manufacturer). Changing a fabric or vinyl may increase the price of the chair - depending on the fabric or vinyl. Call for pricing. For larger pictures of fabrics and vinyls, or for alternative choices, visit the vendor web sites:

**CF Stinson** ([www.cfstinson.com](http://www.cfstinson.com))

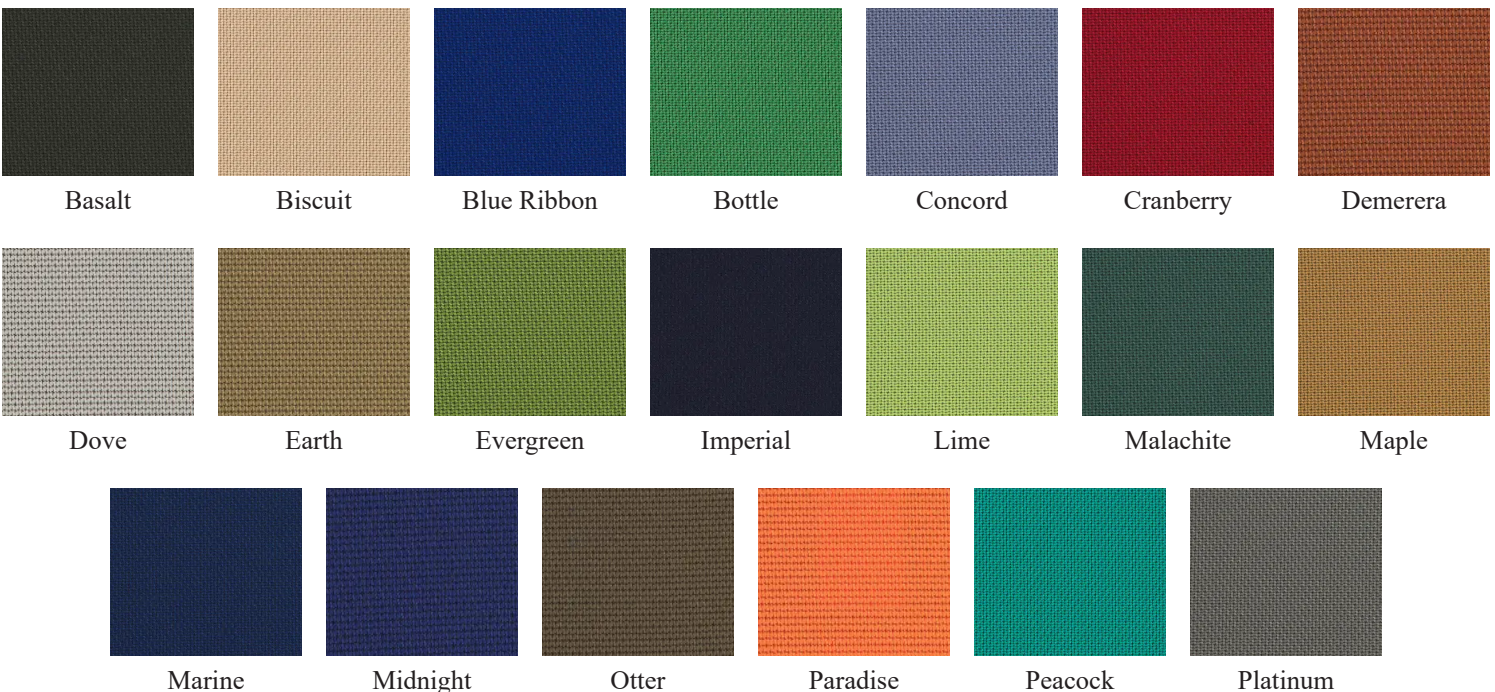
**Design Tex** ([www.designtex.com](http://www.designtex.com))

**Douglass Industries** ([www.dougind.com](http://www.dougind.com))

**Mayer Fabrics** ([www.mayerfabrics.com](http://www.mayerfabrics.com))

**Momentum Textiles** ([www.memosamples.com](http://www.memosamples.com))

## Cross Check - Fabric Samples



## Fedora - Fabric Samples



**\*Printed colors may vary from actual colors.**

Please visit us online at [uci.utah.gov](http://uci.utah.gov) to see all that UCI has to offer!



# Fabric Samples

## Fedora - Fabric Samples (Continued)



## Forte - Fabric Samples



**\*Printed colors may vary from actual colors.**

Please contact us or visit our website for current prices and product availability.



# Fabric Samples

## Foundation 10 - Fabric Samples



**\*Printed colors may vary from actual colors.**

Please visit us online at [uci.utah.gov](http://uci.utah.gov) to see all that UCI has to offer!



# Fabric Samples

## Gem (Velvet Texture) - Fabric Samples



## Meander - Fabric Samples



**\*Printed colors may vary from actual colors.**

Please contact us or visit our website for current prices and product availability.



# Fabric Samples

## Moonscape - Fabric Samples



## Quattro - Fabric Samples



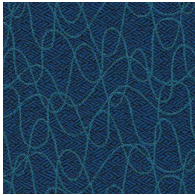
**\*Printed colors may vary from actual colors.**

Please visit us online at [uci.utah.gov](http://uci.utah.gov) to see all that UCI has to offer!

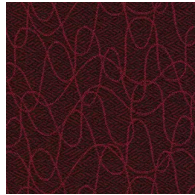


# Fabric Samples

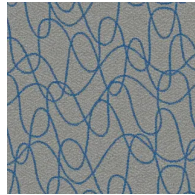
## Samba - Fabric Samples



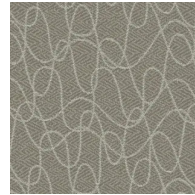
Azure



Burgundy



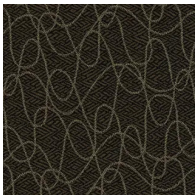
Cerulean



Dove



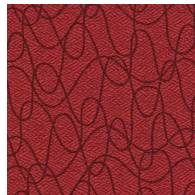
Melon



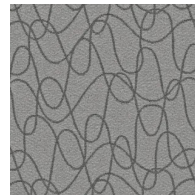
Onyx



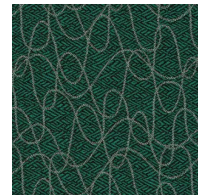
Pearl



Persimmon

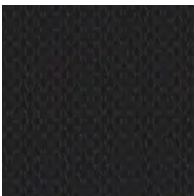


Pewter

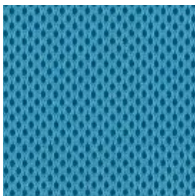


Shamrock

## Spacer Mesh - Fabric Samples



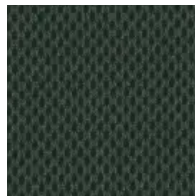
Black



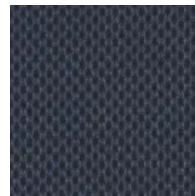
Caribbean



Cayenne



Hunter



Ink



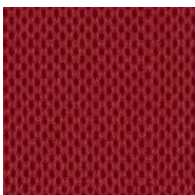
Limelight



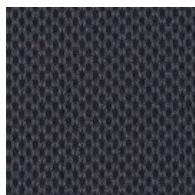
Marigold



Mocha



Paprika



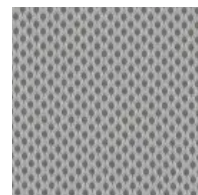
Pewter



Sapphire



Sky



Sterling



Wine

**\*Printed colors may vary from actual colors.**

Please contact us or visit our website for current prices and product availability.

# Vinyl Samples

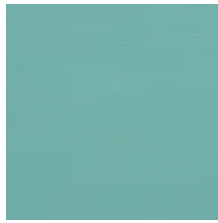
## Caressa - Vinyl Samples



Admiral



Aluminum



Aqua



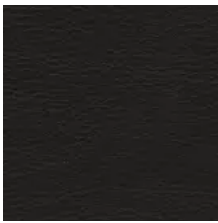
Aubergine



Bark



Bittersweet



Black



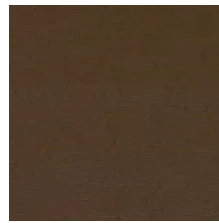
Bluestone



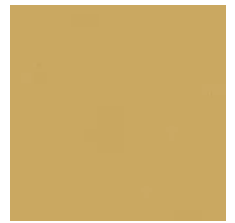
Bone



Buff



Burgundy



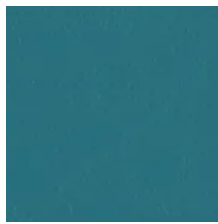
Butter



Butterscotch



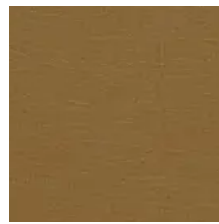
Cadet



Calypso



Cameo



Caramel



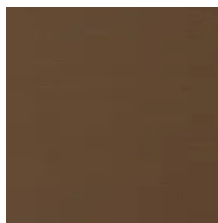
Cerulean



Chocolate



Cloud



Coco



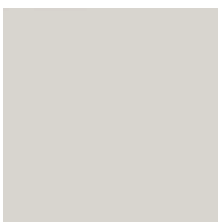
Doe



Dove



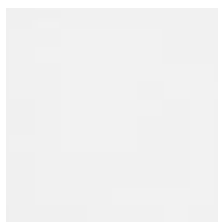
Flax



Glacier



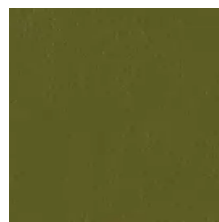
Granite



Ivory



Ivy



Jade



Java

**\*Printed colors may vary from actual colors.**

Please visit us online at [uci.utah.gov](http://uci.utah.gov) to see all that UCI has to offer!



# Vinyl Samples

## Caressa - Vinyl Samples (Continued)

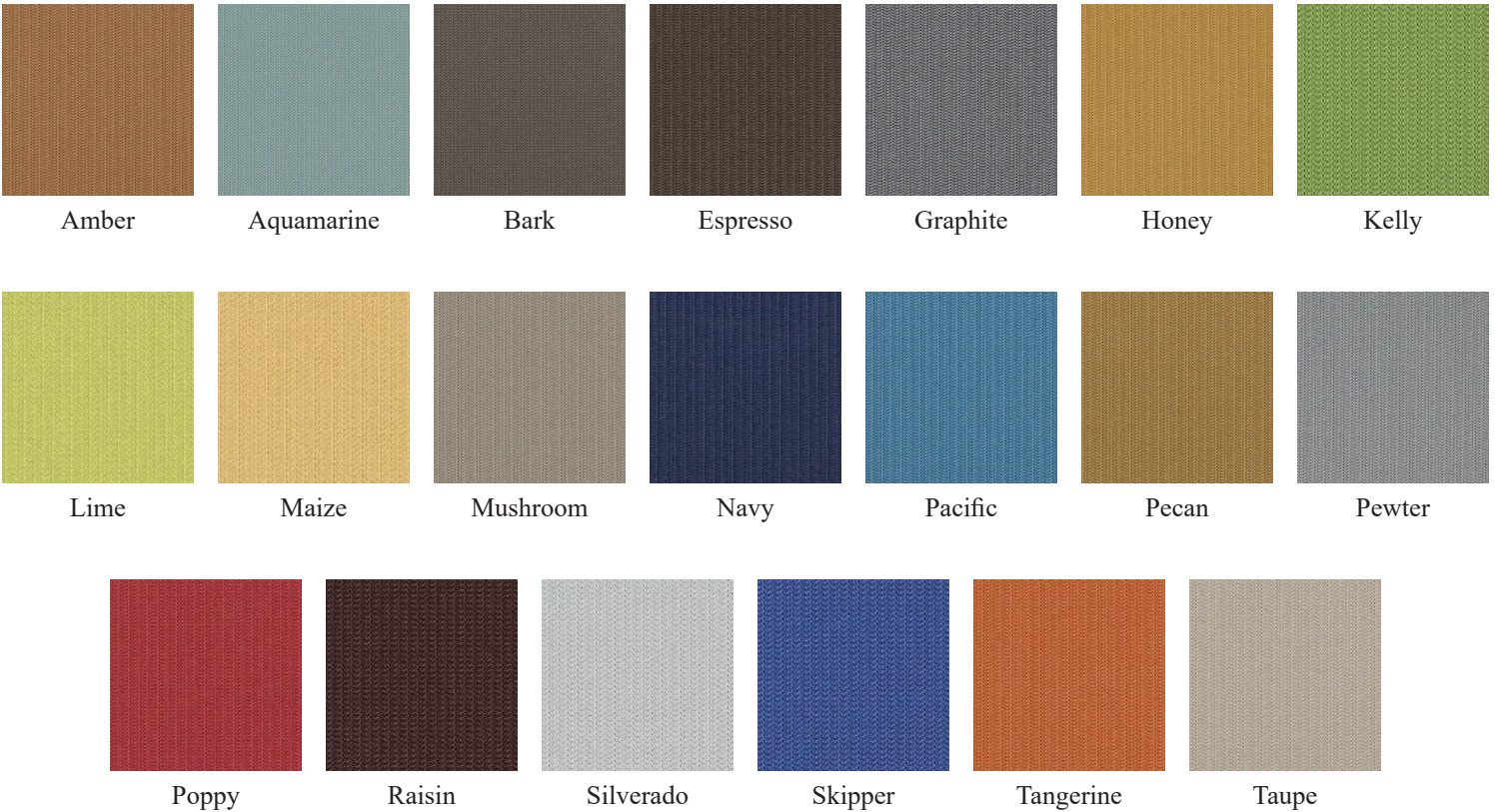
					
Laurel	Lemon	Lime	Lipstick	Magenta	Mocha
					
Mojave	Navy	Oatmeal	Ochre	Pacific	Paprika
					
Papyrus	Parsley	Pearl	Pebble	Pewter	Quarry
					
Rawhide	Red Clay	Red Pepper	Ruby	Saddle	Sand
					
Skipper	Stone	Tangerine	Taupe	Wasabi	Willow

**\*Printed colors may vary from actual colors.**

Please contact us or visit our website for current prices and product availability.

# Vinyl Samples

## Links - Vinyl Samples



## Maverick - Vinyl Samples



**\*Printed colors may vary from actual colors.**

Please visit us online at [uci.utah.gov](http://uci.utah.gov) to see all that UCI has to offer!

# Vinyl Samples

## Noble - Vinyl Samples



## Outback - Vinyl Samples



**\*Printed colors may vary from actual colors.**

Please contact us or visit our website for current prices and product availability.



# Vinyl Samples

## Silverweave (Anti-Microbial) - Vinyl Samples



**\*Printed colors may vary from actual colors.**

Please visit us online at [uci.utah.gov](http://uci.utah.gov) to see all that UCI has to offer!

# Poly & Paint Samples

**600 & 800 Series Stools, Attain, Sitka, Navigator, and Piper Polyurethane (Plastic) Seats, Backs, Armrests, and Metal Frames are available in the colors listed below. See the next page for color swatches. **Not all colors are available on all of the above mentioned chairs, call for details on the specific chair and color you're considering.****

Color	Painted Frame	Molded Plastic Seat & Back	Plastic Armrest
Black	BL	PBL	ABL
Blue Gray	GR	PGR	AGR
Bronze Metallic	ZM		
Cayenne	CY	PCY	
Champagne Metallic	CM		
Chrome	CH		
Cool Gray	CG	PCG	
Cottonwood	CO	PCO	
Diamond Translucent		PDT	
Earthen Clay	EY	PEY	
Espresso Metallic	EX		
Everglade Shade	EV	PEV	
Flannel	FN	PFN	
Glitz Metallic	GZ		
Hazy Jade	HJ	PHJ	
Honey Bee	HY	PHY	
Light Tone	LG	PLG	
Mardi Gras	MG	PMG	
Misty Brown	MY	PMY	
Nemo	NE	PNE	
Nordic	ND	PND	
Pewter Translucent		PPT	
Poppy Red	PR	PPR	
Purple Haze	PH	PPH	
Rubber Ducky	RK	PRK	
Sand	SA	PSA	ASA
Sky Blue	SK	PSK	
Starlight Silver Metallic	SX		
Surf's Up	SP	PSP	
Twilight Shadow	TI	PTI	
Ultra Blue	UB	PUB	
Warm Gray	WG	PWG	AWG
Zesty Lime	ZL	PZL	

**Translucent Colors are available on the upholstered seat models only. Armcaps & glides match the frame color with the following exceptions: When the frame color is Chrome or Metallic, the armcaps & glides will match the poly color. When the back is Diamond Translucent, the armcaps are Light Tone. When the back is Pewter Translucent, the armcaps are Flannel. Casters are black. The frames on most Task Seating come only in Black, Polished Aluminum, or Warm Gray.**

Please contact us or visit our website for current prices and product availability.

# Poly & Paint Samples

**600 & 800 Series Stools, Navigator, and Piper** polyurethane (plastic) and metal color options. Some colors are only available on the metal frame; not the plastic seats, backs and arms (see the chart on the previous page for details).

						
Black	Blue Gray	Bronze Metallic	Cayenne	Champagne Metallic	Chrome	Cool Gray
						
Cottonwood	Diamond Translucent	Earthen Clay	Espresso Metallic	Everglade Shade	Flannel	Glitz Metallic
						
Hazy Jade	Honey Bee	Light Tone	Mardi Gras	Misty Brown	Nemo	Nordic
						
Pewter Translucent	Poppy Red	Purple Haze	Rubber Ducky	Sand	Sky Blue	Starlight Silver Metallic
						
Surf's Up	Twilight Shadow	Ultra Blue	Warm Gray	Zesty Lime		

**\*Printed colors may vary from actual colors.**

Please visit us online at [uci.utah.gov](http://uci.utah.gov) to see all that UCI has to offer!



## Here's an idea...

We have the ability to embroider or screen-print your logo, name, etc on new or reupholstered seating items.



# Seating - WARRANTY

**Our commitment** to your satisfaction does not end with your purchase of UCI products. Utah Correctional Industries warrants seating purchased from UCI to be free from defect in workmanship, when given normal care and use. UCI warrants, for the original purchaser, the products be free of defects in materials and workmanship for 5 years.

UCI's customer service department will repair or replace, at UCI's option, items covered under this UCI warranty, providing they are within the terms set in this warranty.

This UCI warranty is valid only if products are given normal and proper use, and comply with UCI installation and maintenance instructions. UCI assumes no responsibility for repairs to products sustaining damages resulting from user modifications, attachments to a product, misuse, abuse, alteration, or negligent use of the product.

This warranty does not cover the following: damage caused by carrier other than UCI, any material specified by the customer that is not a standard UCI product offering, damage caused by and/or resulting from user modification or negligent use of the UCI product.

There are no other warranties except as expressly set forth herein, either expressed or implied. We exclude and will not pay consequential or incidental damages under this warranty.

UCI guarantees its customers that we will stand behind the workmanship and products produced at UCI, and pledge to do everything reasonably possible to solve problems on a timely basis, within the terms of this warranty.

If you have any questions concerning UCI's warranty policy, or problems with UCI products, please contact UCI at (801) 522-7931.

**Non-obsolescence Policy:** UCI will provide non-obsolescence protection of out of warranty seating by repairing or replacing the obsolete item at a reasonable price.

**801-522-7931**  
**ucicustomerservice@utah.gov**

**Visit our website at**  
**UCI.UTAH.GOV**

**14717 South Minuteman Drive**  
**Draper, Utah 84020**